



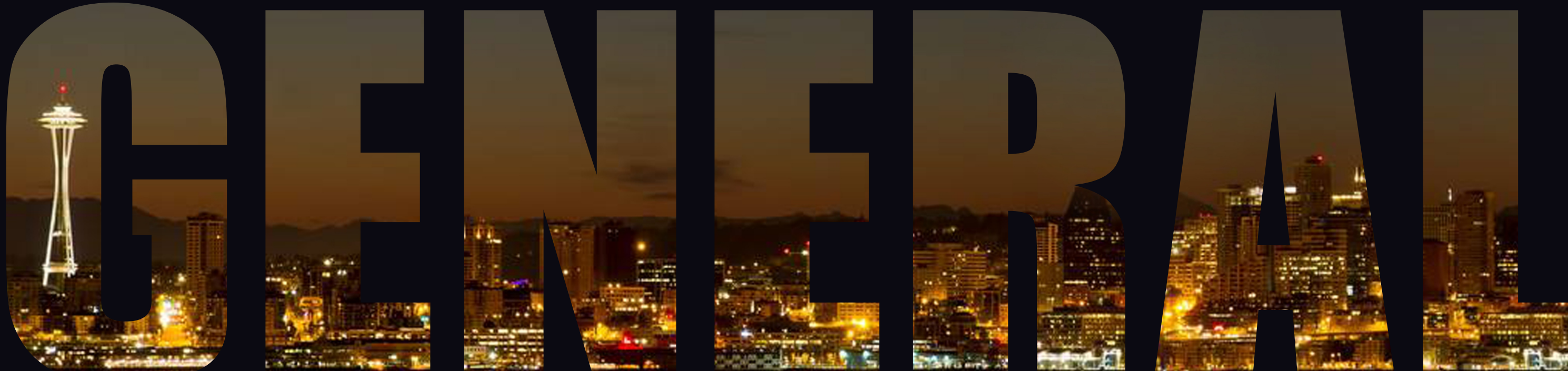
Excalibur

2021



WOODWORKING & METALWORKING MACHINERY

SINCE 1946



Who We Are

General is an Innovator & manufacturer of woodworking, metalworking, & air power equipment solutions. Our products engineered to increase performance in the home & commercial workplace. Our long history, combined with an endless dedication to quality, safety, and service, are the industry leading qualities that transition General prospects into lifetime customers. The long term growth and success of General lies in our vertically integrated and, low cost, innovative manufacturing capabilities combined with an ability to quickly respond to you and your customer's dynamic needs. Our corporate team will listen to all your needs and suggestions to create tools and accessories that the market demands and quicker than our competition. The General Sales network provides personal localized field sales expertise domestically and internationally.

Our History

In 1946, following the end of World War II, General established several manufacturing facilities in Montreal Canada to produce high quality Commercial/Industrial woodworking & metalworking machinery. During the past 70 years, the General name grew to represent several generations of technical, high precision equipment. In 2003 General acquired the "Excalibur" brand of scroll saws and woodworking accessories. The 2014 acquisition of General by one of the largest Global manufacturers of woodworking machinery, metalworking machinery & air compressors created the perfect combination of North America market expertise and large scale manufacturing capabilities. Today, General International's branded "Green Line" of Industrial Products is considered to be the gold standard of woodworking and metalworking machinery. With the recent addition of the new "Red Line", General International & Excalibur branded products has expanded its customer base from a wide range of metalworking & woodworking businesses to include contractors and homeowners.



CONTENTS

ABOUT OUR BRANDS

PRODUCTS & ACCESSORIES

01/10	Dust Collection
11/14	Air Filtration System
15/21	Grinders
22/28	Drill Presses
29/32	Band Saws
33/34	Wood Lathe
35/36	Jointer
37/43	Table Saws
44/48	Scroll Saws
49/51	Router Table
52/54	CNC Machine



DUST COLLECTION



NEW!



10-030 M1



10-030DAS M1



Dual Auto Switch
*Patent pending



10-030CF M1
10-030CF DAS M1

Features

- "Auto Switch" where machine can be directly connected, plugged into the dust collector, when the machine is turned ON/OFF the dust collector will be turned ON/OFF automatically.(DAS Units ONLY)
- Convenient "Snap Ring" on lower collection bag.
- Powerful 1 HP TEFC motor features sealed bearing and shaft for quiet, long-lasting operation.
- Safety switch with key. Unit cannot be started when key is removed from the switch.
- Plastic impeller for smooth operation & minimal noise.
- Reusable clear plastic collector bag for improved dust collection efficiency.
- Collector body mounted on 4 heavy-duty supports.
- Equipped with 2 micron filter bag(not included on "CF" canister filter model).
- Equipped with high efficiency 1 micron canister filter(only for "CF" canister filter model)
- 2" wheels for exceptional stability and smooth mobility.
- ETL(Electrical Testing Laboratories) certified.

SMART™
CONE

SMART CONE

Exclusive Smart Cone technology brings creative innovation of dust collection. Significantly improves packing efficiency of the collector bag, prevent filter clogging by improving chip separation, make your shop cleaner and keep the dust away from your lungs.



*Patent pending

10-030CF M1/CF DAS M1 | Dust Collector - 1 HP



Canister Filter
#10-006S



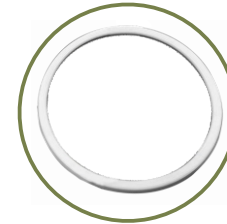
4" x 10" Polyethylene
Flexible Hose
#10-410



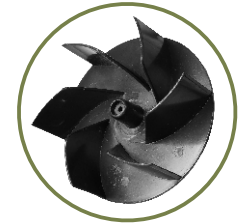
2 Micron Filter Bag
#10-015



Clear Plastic Collector Bag
#10-016



Φ13 1/8" Snap ring
#10-073



Impeller
#10-095

Optional Accessories

4" x 2 1/2" reducer (#10-072)
Bag Clamp (#10-092)
Dust hood 8 1/4" x 8 1/4" x 4" (#10-076)
Floor sweeps (#10-078)
4" blast gate (#10-080)
4" Y-fitting (#10-083)

4" elbow (#10-084)
4" splice (#10-085)
4" x 2 1/2" reducer (#10-086)
4" x 10" dust hood (#10-087)
4" cap (#10-088)
4" hose clamp (#10-089)

SPECIFICATION

ITEM NO.	10-030 M1	10-030DAS M1	10-030CF M1	10-030CF DAS M1
STYLE(TYPE)	Filter Bag	Filter Bag	Canister	Canister
INLET DIAMETER	4" (102 mm)		4" (102 mm)	
AIRFLOW CAPACITY	506 CFM		506 CFM	
SOUND RATING	80-85 dB		80-85 dB	
BLOWER WHEEL DIAMETER	10" (254 mm)		10" (254 mm)	
STATIC PRESSURE	6 3/4" of water		6 3/4" of water	
FILTER BAG/CANISTER SIZE	13 3/4" x 25 1/2" (Φ350 x 650 mm)		14 1/2" x 20 1/2" (Φ370 x 530 mm)	
OVERALL DIMENSIONS (L x W x H)	32" x 15 1/8" x 59 3/8" (815 x 385 x 1520 mm)		32" x 15 1/8" x 54 1/2" (815 x 385 x 1380 mm)	
MOTOR	1 HP, 110 V, 7 A		1 HP, 110 V, 7 A	
WEIGHT(N.W/G.W)	51 1/2lbs(23.3kg)/55 1/2 lbs (25.3 kg)	54 3/4lbs(24.85kg)/59 1/4lbs(26.85kg)	64 1/2lbs(29.35kg)/71 1/2lbs(32.5kg)	68 1/2lbs(30.9kg)/75 1/2lbs(34.05kg)
SWITCH	Safety switch with key	Dual Auto Switch	Safety switch with key	Dual Auto Switch

NEW!



10-105 M1
10-105 DAS M1



Dual Auto Switch
*Patent pending



10-105CF M1
10-105CF DAS M1

Features

- "Auto Switch" where machine can be directly connected, plugged into the dust collector, when the machine is turned ON/OFF the dust collector will be turned ON/OFF automatically. (DAS Units ONLY)
- Convenient "Snap Ring" on lower collection bag.
- Heavy-duty motor design with a continuous duty rating for industrial applications.
- Equipped with totally enclosed, fan cooled, permanently lubricated motor.
- Designed for industrial applications with a continuous duty rating.
- Heavy-duty base, mounted on four swivel casters, allowing total mobility and stability.
- Safety switch with key. Unit cannot be started when key is removed from the switch.
- Precision "SPARK FREE" spin-balanced impeller for smooth operation and minimal noise.
- Reusable clear plastic collector bag for improved dust collection efficiency.
- Equipped with 2 micron filter bag. (Not included on "CF" canister filter model).
- Intake screen prevents larger pieces from jamming in the impeller.
- Heavy-duty collection bag made from extra thick, transparent, recyclable plastic.
- ETL (Electrical Testing Laboratories) certified.

SMART™
CONE

SMART CONE

Exclusive Smart Cone technology brings creative innovation of dust collection. Significantly improves packing efficiency of the collector bag, prevent filter clogging by improving chip separation, make your shop cleaner and keep the dust away from your lungs.



*Patent pending

10-105 CF M1/CF DAS M1 | Dust Collector - 1.5HP



Canister Filter
#10-106M



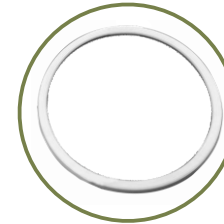
4" x 50" Polyethylene
Flexible Hose
#10-450



2 Micron Filter Bag
#10-115



Clear Plastic Collector Bag
#10-120



Φ18 1/8" Snap ring
#10-074



Impeller
#10-096

Optional Accessories

4" x 2 1/2" reducer (#10-072)
Bag Clamp (#10-093)
Dust hood 8 1/4" x 8 1/4" x 4" (#10-076)
Floor sweeps (#10-078)
4" blast gate (#10-080)
4" Y-fitting (#10-083)

4" elbow (#10-084)
4" splice (#10-085)
4" x 2 1/2" reducer (#10-086)
4" x 10" dust hood (#10-087)
4" cap (#10-088)
4" hose clamp (#10-089)



SPARK FREE

Precision "SPARK FREE" spin balanced impeller for smooth operation & minimal noise.

SPECIFICATION

ITEM NO.	10-105 M1	10-105 DAS M1	10-105 CF M1	10-105 CF DAS M1
STYLE(TYPE)	Filter Bag		Canister	
INLET DIAMETER	1x6" (152 mm) / 2x4" (102 mm)		1x6" (152 mm) / 2x4" (102 mm)	
AIRFLOW CAPACITY	1250 CFM		1250 CFM	
BLOWER WHEEL DIAMETER	11" (280 mm)		11" (280 mm)	
SOUND RATING	80 to 85 dB		80 to 85 dB	
FILTER BAG/CANISTER SIZE	19 3/8" x 34 1/2" (Φ500 x 870 mm)		20 1/4" x 24 3/4" (Φ515 x 630 mm)	
BAG CAPACITY	42 gallon (190.9 L)		42 gallon (190.9 L)	
STATIC PRESSURE	9" of water		9" of water	
OVERALL DIMENSIONS (L x W x H)	37 3/8" x 29 1/2" x 76 3/8" (950 x 750 x 1940 mm)		37 3/8" x 29 1/2" x 67 3/4" (950 x 750 x 1720 mm)	
MOTOR	1 1/2 HP, 110V, 1 Ph, 14 A		1 1/2 HP, 110V, 1 Ph, 14 A	
WEIGHT (N.W/G.W)	92% lbs (42 kg) / 107% lbs (48.65kg)	96 lbs (43.55 kg) / 110% lbs (50.2kg)	113% lbs (51.35 kg) / 132% lbs (60.15kg)	116% lbs (52.9 kg) / 136 lbs (61.7kg)
SWITCH	Safety switch with key	Dual Auto Switch	Safety switch with key	Dual Auto Switch

NEW!



10-110 M1
10-110 DAS M1



Dual Auto Switch
*Patent pending



10-110 CF M1
10-110 CF DAS M1

Features

- "Auto Switch" where machine can be directly connected, plugged into the dust collector, when the machine is turned ON/OFF the dust collector will be turned ON/OFF automatically. (DAS Units ONLY)
- Convenient "Snap Ring" on lower collection bag.
- Heavy-duty motor design with a continuous duty rating for industrial applications.
- Equipped with totally enclosed, fan cooled, permanently lubricated motor.
- Designed for industrial applications with a continuous duty rating.
- Heavy-duty base, mounted on four swivel casters, allowing total mobility and stability.
- Safety switch with key. Unit cannot be started when key is removed from the switch.
- Precision "SPARK FREE" spin-balanced impeller for smooth operation and minimal noise.
- Reusable clear plastic collector bag for improved dust collection efficiency.
- Equipped with 2 micron filter bag. (Not included on "CF" canister filter model).
- Intake screen prevents larger pieces from jamming in the impeller.
- Heavy-duty collection bag made from extra thick, transparent, recyclable plastic.
- ETL (Electrical Testing Laboratories) certified.

SMART™
CONE

SMART CONE

Exclusive Smart Cone technology brings creative innovation of dust collection. Significantly improves packing efficiency of the collector bag, prevent filter clogging by improving chip separation, make your shop cleaner and keep the dust away from your lungs.



*Patent pending

10-110 CF M1/CF DAS M1 | Dust Collector - 2HP



Canister Filter
#10-106M



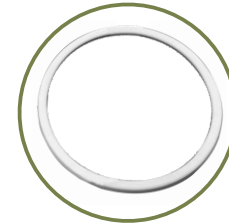
4" x 50" Polyethylene
Flexible Hose
#10-450



2 Micron Filter Bag
#10-115



Clear Plastic Collector Bag
#10-120



Φ18 1/8" Snap ring
#10-074



Impeller
#10-097

Optional Accessories

4" x 2 1/2" reducer (#10-072)
Bag Clamp (#10-093)
Dust hood 8 1/4" x 8 1/4" x 4" (#10-076)
Floor sweeps (#10-078)
4" blast gate (#10-080)
4" Y-fitting (#10-083)

4" elbow (#10-084)
4" splice (#10-085)
4" x 2 1/2" reducer (#10-086)
4" x 10" dust hood (#10-087)
4" cap (#10-088)
4" hose clamp (#10-089)



SPARK FREE

Precision "SPARK FREE" spin balanced impeller for smooth operation & minimal noise.

SPECIFICATION

ITEM NO.	10-110 M1	10-110 DAS M1	10-110 CF M1	10-110CF DAS M1
STYLE(TYPE)	Filter Bag		Canister	
INLET DIAMETER	1x6" (152 mm) / 2x4" (102 mm)		1x6" (152 mm) / 2x4" (102 mm)	
AIRFLOW CAPACITY	1550 CFM		1550 CFM	
BLOWER WHEEL DIAMETER	12" (305 mm)		12" (305 mm)	
SOUND RATING	80 to 90 dB		80 to 90 dB	
FILTER BAG/CANISTER SIZE	19 3/8" x 34 1/2" (Φ500 x 870 mm)		20 1/4" x 24 3/4" (Φ515 x 630 mm)	
BAG CAPACITY	42 gallon (190.9 L)		42 gallon (190.9 L)	
STATIC PRESSURE	11 1/4" of water		11 1/4" of water	
OVERALL DIMENSIONS (L x W x H)	37 3/8" x 29 1/2" x 76 3/8" (950x750x1940 mm)		37 3/8" x 29 1/2" x 67 3/4" (950x750x1720 mm)	
MOTOR	2 HP, 110/220 V, 1 Ph, 15 A		2 HP, 110/220 V, 1 Ph, 15 A	
WEIGHT (N.W/G.W)	93 3/4 lbs (42.35 kg) / 108 3/4 lbs (49.3 kg)	96 3/4 lbs (43.9 kg) / 112 lbs (50.85 kg)	114 lbs (51.7 kg) / 134 lbs (60.8 kg)	117 3/4 lbs (53.25 kg) / 137 1/2 lbs (62.35 kg)
SWITCH	Safety switch with key	Dual Auto Switch	Safety switch with key	Dual Auto Switch



10-210M1
10-210 DAS M1

NEW!



Dual Auto Switch
*Patent pending



10-210CF M1
10-210 CF DAS M1

Features

- "Auto Switch" where machine can be directly connected, plugged into the dust collector, when the machine is turned ON/OFF the dust collector will be turned ON/OFF automatically.(DAS Units ONLY)
- Convenient "Snap Ring"on lower collection bag.
- Heavy-duty motor design with a continuous duty rating for industrial applications.
- Equipped with a totally enclosed, fan cooled, permanently lubricated motor.
- Heavy-duty base, mounted on four swivel casters for total mobility and stability.
- Precision "SPARK FREE" spin-balanced impeller for smooth operation, minimal noise and to reduce the risk of sparking.
- Equipped with 2 micron filter bags (not included on "CF" canister filter model).
- Safety switch with key, prevents unit from being started when key is removed.
- Heavy-duty collection bags made from extra thick, transparent, recyclable plastic.
- ETL(Electrical Testing Laboratories) certified.

SMART™
CONE

SMART CONE

Exclusive Smart Cone technology brings creative innovation of dust collection. Significantly improves packing efficiency of the collector bag, prevent filter clogging by improving chip separation, make your shop cleaner and keep the dust away from your lungs.



*Patent pending

10-210 CF M1/CF DAS M1 | Dust Collector - 3 HP



Canister Filter
#10-106M



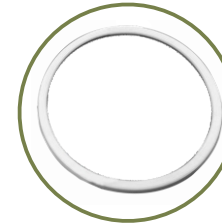
4" x 50" Polyethylene
Flexible Hose
#10-450



2 Micron Filter Bag
#10-115



Clear Plastic Collector Bag
#10-120



Φ18 1/8" snap ring
#10-074



Impeller
#10-097

Optional Accessories

4" x 2 1/2" reducer (#10-072)
Bag Clamp (#10-093)
Dust hood 8 1/4" x 8 1/4" x 4" (#10-076)
Floor sweeps (#10-078)
4" blast gate (#10-080)
4" Y-fitting (#10-083)

4" elbow (#10-084)
4" splice (#10-085)
4" x 2 1/2" reducer (#10-086)
4" x 10" dust hood (#10-087)
4" cap (#10-088)
4" hose clamp (#10-089)



SPARK FREE

Precision "SPARK FREE" spin balanced impeller for smooth operation & minimal noise.

SPECIFICATION

ITEM NO.	10-210 M1	10-210 DAS M1	10-210 CF M1	10-210CF DAS M1
STYLE(TYPE)	Filter Bag		Canister	
INLET DIAMETER	1x6" (152 mm) / 2x4" (102 mm)		1x6" (152 mm) / 2x4" (102 mm)	
AIRFLOW CAPACITY	2280 CFM		2280 CFM	
BLOWER WHEEL DIAMETER	12" (305 mm)		12" (305 mm)	
SOUND RATING	80 to 95 dB		80 to 95 dB	
FILTER BAG/CANISTER SIZE	19 3/4" x 34 1/2" (Φ500 x 870 mm)		20 1/4" x 24 3/4" (Φ515 x 630 mm)	
BAG CAPACITY	83 gallon (377 l)		83 gallon (377 l)	
STATIC PRESSURE	15 1/2" of water		15 1/2" of water	
OVERALL DIMENSIONS (L x W x H)	56 3/4" x 27 1/2" x 76 3/8" (1440 x 700 x 1940 mm)		56 3/4" x 27 1/2" x 67 3/8" (1440 x 700 x 1725 mm)	
MOTOR	3HP, 220 V, 1 Ph, 18 A		3 HP, 220 V, 1 Ph, 18 A	
WEIGHT (N.W/G.W)	105 3/8 lbs (47.95 kg)	120 1/8 lbs (54.5 kg)	109 lbs (49.5 kg)	123 1/8 lbs (56 kg)
SWITCH	Safety switch with key	Dual Auto Switch	Safety switch with key	Dual Auto Switch

Description	Item No	Picture	Specification
Reducer	10-072		4" x 2 ½"
Dust Hood	10-076		8 ¼" x 8 ¼" x 4"
Floor Sweeps	10-078		4"
Blast Gate	10-080		4"
Y-fitting	10-083		4"
Elbow	10-084		4"

Description	Item No	Picture	Specification
Splice	10-085		4"
Reducer	10-086		4" x 2 ½"
Dust Hood	10-087		4" x 10"
Cap	10-088		4"
Hose Clamp	10-089		4"
Bag Clamp	10-092 10-093		-



AIR FILTRATION SYSTEM



NEW!



10-1000

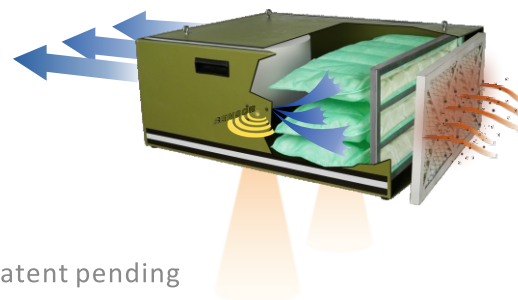
SPECIFICATION

ITEM NO.	10-1000
MOTOR	1/5HP, 110V, 60Hz, 1PH, 4P, 4.5A
OUTER FILTER	5 Microns
INNER FILTER	1 Microns
SOUND RATING@3FT	High speed 71dB Medium speed 68dB Low speed 61dB
AIR FLOW	High speed 1068CFM Medium speed 710CFM Low speed 560CFM
FILTER CYCLE	3.2 per minute
CYCLES PER HOUR(20'X20'X8')	21.2
OVERALL DIMENSIONS(LXWXH)	30"x23 3/4"x11 1/4" (762x606x300mm)
WEIGHT(N.W/G.W)	63 3/4lbs(28.65kg)/69 1/2lbs(31.5kg)

Features

- NEW Patented Pending SMART™ infrared dust sensor control system which could detect more than 1 micron particles in the air, such as cigarette smoke, house dust, mold, pollen and spores, etc.
- Two-layer high-efficiency filtration system with air diffuser disperses outgoing air into a broader pattern, has the function of electrostatic absorption, which enhances the filtration effect on fine particles and toxic pollution particles.
- Disposable Electrostatic Outer Filter attracts more dust particles than standard filters.
- Inner Pocket Filter is removable for easy cleaning.
- Two running modes: manual and auto Start-Stop mode. In standby mode, the air flow and 1-12 hours timing can be set manually by the remote control. Under the automatic mode, the machine can auto run according to the start and stop values preset by user. The large size touch control LCD panel can reflect the air quality and functional parameters according to the sensor signal.
- Easy Grip Handles allow easy portability of unit.
- Four Eye Bolts let you hang unit from shop ceiling.
- Intellectual controlled Air filter system with remote control which has built-in timer with 1-12 hours settings.
- Three-speed adjustable high speed low noise centrifugal blower, fully-enclosed ball bearing motor with overload protection for long, dependable service.
- LED Lights on the bottom of unit to illuminate work area beneath air filtration unit.

SMART™
— AIR CLEANER —



*Patent pending



LCD Display Screen



HEPA and Charcoal Filters

Features

- NEW Patented Pending SMART™ infrared dust sensor control system which could detect more than 1 micron particles in the air, such as cigarette smoke, house dust, mold, pollen and spores, etc.
- Four-layer filtration system: An electrostatic filter, an eight-bag inner filter, and a diffuser filter, PM2.5 filter(optional) --combine to remove 99% of all particles 5 microns in size and 85% of particles 1 micron in size.
- Optional activated carbon filtration layer and HEPA filtration layer.
- Intellectual controlled Air filter system with remote control which has built-in timer with 1-12 hours settings.
- When running time reaches the preset value, the display screen will light up the indicator that prompts the user to change the filter element. The user can regularly observe the dust condition of the outer initial filter element according to the prompt or by himself to clean or replace it.
- The special developed external structure can be both lifted and flat wised, suitable for various occasions. It can solve the problem of insufficient space and inconvenient arrangement.
- Scope of application: carpentry, food, metallurgy, textile, pharmaceutical, automotive, chemical, electroplating, mineral processing, petroleum, dye, light industry, and other industries.
- Specially designed ultraviolet lamps and plasma sterilizers can eliminate viruses and bacteria in the air more effectively. It is specially used in various occasions with high sanitary requirements or dark, damp, and poor ventilation.

NEW!

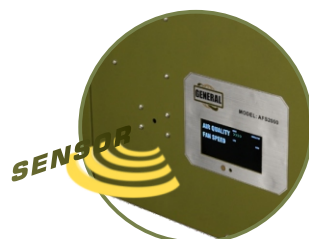


10-2000

SPECIFICATION

ITEM NO.	10-2000
MOTOR	1/3HP, 110V, 60Hz, 1PH
OUTER FILTER	5 Microns
INNER FILTER	1 Microns
SOUND RATING@3FT	High speed 76dB Medium speed 72dB Low speed 68dB
AIR FLOW	High speed 1750CFM Medium speed 1330CFM Low speed 880CFM
FILTER CYCLE	1.9 per minute
CYCLES PER HOUR(20'X20'X8')	32.2
OVERALL DIMENSIONS(LXWXH)	44"X24 3/4"X20 1/4" (1120x620x515mm)
WEIGHT(N.W/G.W)	108 1/2 lbs(49.15kg)/116lbs(52.65kg)

SMART™
— AIR CLEANER —



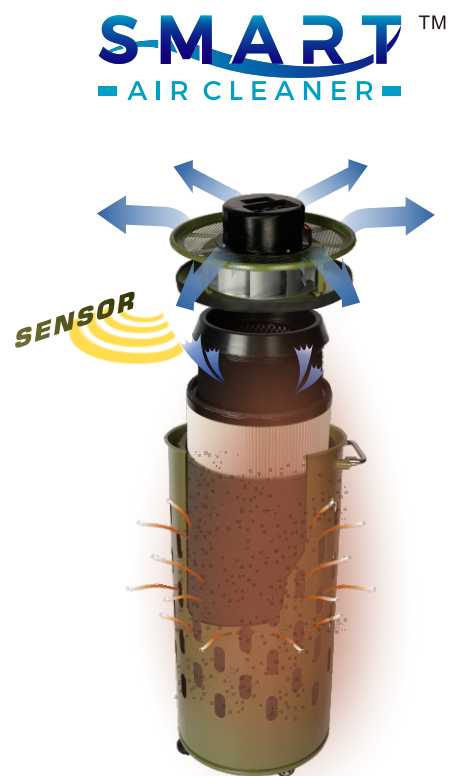
Infrared Detection
Sensor



HEPA and Charcoal
Filters

NEW! Features

- NEW Patented Pending SMART™ infrared dust sensor control system which could detect more than 1 micron particles in the air, such as cigarette smoke, house dust, mold, pollen and spores, etc.
- Two running modes: manual and auto Start-Stop mode. In standby mode, the air flow and 1-12 hours timing can be set manually by the remote control. Under the automatic mode, the machine can auto run according to the start and stop values preset by user.
- When running time reaches the preset value, the display screen will light up the indicator that prompts the user to change the filter element. The user can regularly observe the dust condition of the outer initial filter element according to the prompt or by himself to clean or replace it.
- Triple filtration combination with electrostatic adsorption function to enhance filtering effect on fine particles .
- The unique cylindrical shape can save more space and 360° perimeter filter access allows the dust to enter from any direction.
- Optional activated carbon filtration layer and HEPA filtration layer.
- The folding handle and flexible universal caster helps machine to move freely.
- Three-speed adjustable high speed low noise centrifugal blower.
- A quick-release clip for quick replace the filter element.



*Patent pending



10-1440



SPECIFICATION

ITEM NO.	10-1440
MOTOR	1/5HP, 110V, 60Hz, 5.5A
OUTER FILTER	5 Microns
INNER FILTER	1 Microns
SOUND RATING@3FT	High speed 75dB
	Medium speed 69dB
	Low speed 65dB
AIR FLOW	High speed 1550CFM
	Medium speed 1260CFM
	Low speed 980CFM
OVERALL DIMENSIONS(HeightXDia.)	31½ "X14"(800x358mm)
WEIGHT(N.W/G.W)	31lbs(14.1kg)/34½ lbs(15.6kg)



Folding Handle



LCD Touch Control Display



Rubber Universal Caster



BENCH GRINDER



Features

- The double grinding machines are very suitable for the professional who sets high requirements.
- High power rating and extensive range of accessories.
- High operating reliability, low-vibration and low noise level.
- Switch with no-volt release and emergency stop, thermal overload protection.
- Grinding wheels optimally accessible.
- Tilttable polycarbonate eye shields.
- Stable cast iron tool rests fixed on both sides of guards with quick adjust.
- Optional steel-wire brush can be fitted inside the wheel guard.
- High quality, Low-temperature sintering grinding wheel could grind, sharpen and smooth with equal precision and flawless results.
- Follows strict guidelines and electrical requirements to be ETL listed for added safety.
- Machines are supplied as standard with protective covers and dust extractor connection \varnothing 50 mm.
- ETL(Electrical Testing Laboratories) certified.



15-650 M1

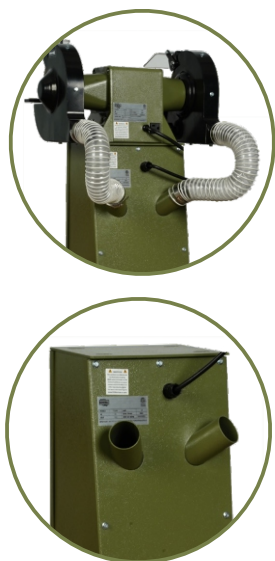


15-670 M1

SPECIFICATION

ITEM NO.	15-650 M1	15-670 M1
MOTOR	½HP, 120 V, 1Ph, 3.1A	½ HP, 120 V, 1Ph, 3.1A
SPEED(RPM)	2800-3400 rpm	1400-1750 rpm
WHEEL SIZE(D1xBxD2)	6" x ¾" x ⅝" 150 x 20 x 15 mm	6" x 1 ½"(L)/¾"(R) x ⅝" 150 x 40(L)/20(R) x 15 mm
ARBOR/SHAFT SIZES	⅝"(15mm)	⅝"(15mm)
TPI (THREADS PER INCH)	½"-13UNC	½"-13UNC
GRIT(LEFT/RIGHT)	36/80	100/80
WHEEL STONE(LEFT/RIGHT)	normal corundum	aluminium oxide/ normal corundum
WEIGHT(N.W/G.W)	26½lbs(12kg)/28½lbs(12.85kg)	26½lbs(12kg)/28½lbs(12.85kg)

15-850 M1 & 15-870 M1 | 8" Bench Grinder



- 15-850M1 on pedestal stand with integrated dust extraction (# 15850-100)



*Patent pending

15-850 M1



15-870 M1



SPECIFICATION

ITEM NO.	15-850 M1	15-870 M1
MOTOR	¾ HP, 120 V ,1Ph, 4.6A	¾ HP, 120 V ,1Ph, 4.6A
SPEED(RPM)	2800-3400 rpm	1400-1750 rpm
WHEEL SIZE(D1xBxD2)	8" x 1" x ½" 200 x 25 x 15 mm	8" x 1 ½"(L)/1"(R) x ½" 200 x 40(L)/25(R) x 15 mm
ARBOR/SHAFT SIZES	⅝"(15 mm)	⅝"(15 mm)
TPI (THREADS PER INCH)	⅝"-11UNC	⅝"-11UNC
GRIT(LEFT/RIGHT)	36/80	100/80
WHEEL STONE(LEFT/RIGHT)	Normal Corundum	Aluminium Oxide/ Normal Corundum
WEIGHT(N.W/G.W)	38¾lbs(17.6kg)/41½lbs(18.8kg)	38¾lbs(17.6kg)/41½lbs(18.8kg)



15-855 M1

Features

- Combine surface grinding and contact grinding on the belt with conventional grinding on the grinding wheel.
- High operating reliability, low-vibration running.
- Perfectly balanced to ensure minimum noise.
- Extensive range of accessories.
- Aluminum belt tension roller, easy-to-change abrasive belt.
- Switch with no-volt release and emergency stop, thermal overload protection.
- Stable cast iron tool rests fixed on both sides with quick adjust.
- Big tiltable polycarbonate eye shields.
- Machines are supplied as standard with protective covers and dust extractor connection \varnothing 50 mm.
- ETL(Electrical Testing Laboratories) certified.

Optional Accessories

- 8" x 1"x $\frac{5}{8}$ " Grinding wheel normal corundum, Grit 80 (#158101-80)
- 8" x $\frac{3}{4}$ " x $\frac{5}{8}$ " Steel wire brush (#15861-002)
- 6" & 8" Pedestal Stand for Bench Grinders without dust extraction(#15850-110)
- 6" & 8" Pedestal Stand for Bench Grinders with integrated dust extraction (#15850-100)
- 39 $\frac{3}{8}$ " x 2"(1000x50mm) Belt ,Grit 80 for 15-855M1(#15876-040)

SPECIFICATION

ITEM NO.	15-855 M1
MOTOR	$\frac{3}{4}$ HP,120V,1Ph,4.6A
SPEED(RPM)	2800-3400 rpm
BELT SIZE	39 $\frac{3}{8}$ " x 2"(1000x50mm)
GRIT	80
WHEEL SIZE (D1XBXD2)	8"x1"x $\frac{5}{8}$ "(200 x 25 x 15mm)
GRIT	80
ARBOR/SHAFT SIZE	$\frac{5}{8}$ "(15mm)
WHEEL STONE	normal corundum
WEIGHT(N.W/G.W)	43 $\frac{1}{2}$ lbs(19.7kg)/47 $\frac{1}{2}$ lbs(21.65kg)



Fitted with Vulcanised Contact Wheel with Grooves



With Graphite Strip for Belt Guiding



Belt Grinder Side Adjustable in Height



Range of Belts Available

15-680 M1 15-880 M1 | Double Polishing Machines

Features

- The double polishing machines are available in two versions, for polishing wheels with a diameter of 6" and 8".
- Both versions are equipped on both sides with a conical spindle and are fitted with polishing covers for optimum safety.
- High power rating and extensive range of accessories.
- High operating reliability, low-vibration and low noise level.
- Follows strict guidelines and electrical requirements to be ETL listed for added safety.
- Polishing wheels in 6" or 8" are suitable for fitting to the conical spindle.
- Polishing covers in 6" or 8" ensure safety during polishing.
- ETL (Electrical Testing Laboratories) certified.

Optional Accessories

Conical spindle on shaft-end for 15-680 M1(# 15600-001)
 Conical spindle on shaft-end for 15-880 M1(#15800-002)
 6" x ¾" x ⅝" Buffer mop linen for 15-680 M1(#15661-001)
 6" x ¾" x ⅝" Buffer mop flannel for 15-680 M1(#15671-001)
 8" x ¾" x ⅝" Buffer mop linen for 15-880 M1(#15661-002)
 8" x ¾" x ⅝" Buffer mop flannel for 15-880 M1(#15871-002)
 6" & 8" Pedestal Stand for Bench Grinders without dust extraction(#15850-110)
 6" & 8" Pedestal Stand for Bench Grinders with integrated dust extraction (#15850-100)



15-680 M1



15-880 M1

SPECIFICATION

ITEM NO.	15-680 M1	15-880 M1
MOTOR	½HP, 120 V, 1Ph, 3.1A	¾ HP, 120 V, 1Ph, 4.6A
ARBOR/SHAFT SIZES	⅝"(15 mm)	⅝"(15 mm)
SPEED	3400 rpm	3400 rpm
POLISHING WHEEL(NOT INCLUDED)	6" x ¾" x ⅝" (150x20x15mm)	8" x ¾" x ⅝" (200x20x15mm)
WEIGHT(N.W/G.W)	17½ lbs(7.85kg)/19½ lbs(8.75kg)	24lbs(10.85kg)/26½lbs(12.1kg)



Polishing Wheel
(not Included)

Compatible with all General International Bench Grinders.



15850-110

6" & 8" Pedestal Stand for Bench Grinders Without Dust Extraction



15850-100

6" & 8" Pedestal Stand for Bench Grinders With Dust Extraction

- Easy to-change heat resistant filter in collector tray.










Back Side

*Patent pending

SPECIFICATION

ITEM NO.	15850-110	15850-100
HEIGHT	33 ½" (850 mm)	33 ½" (850 mm)
BASE TYPE	15 ½"x13" (390x330mm)	15 ½"x13" (390x330mm)
WEIGHT(N.W/G.W)	44 lbs(20 kg)/48½lbs(22kg)	55 lbs(25 kg)/59½lbs(27kg)
MAXIMUM LOAD CAPACITY	120 lbs	120 lbs

Bench Grinder Accessories

Description	Item No	Picture	Specification	Description	Item No	Picture	Specification
Grinding Wheel Normal Corundum	156101-36/80		φ6" x ¾" x ⅝", Grit 36/80 (150x20x15mm)	Buffer Mop Linen	15661-001		φ6" x ¾" x ⅝" (150x20x15mm)
	158101-36/80		φ8" x 1" x ⅝", Grit 36/80 (200x25x15mm)		15861-002		φ8" x 1" x ⅝" (200x25x15mm)
Grinding Wheel Sillicium Carbide Grit 120 for Hard Metal	15620-120		φ6" x ¾" x ⅝", Grit 120 (150x20x15mm)	Buffer Mop Flannel	15671-001		φ6" x ¾" x ⅝", Grit 120 (150x20x15mm)
	15820-120		φ8" x 1" x ⅝", Grit 120 (200x25x15mm)		15871-002		φ8" x 1" x ⅝", Grit 120 (200x25x15mm)
Grinding Wheel Aluminium Oxide	156301-60/100		φ6" x ¾" x ⅝", Grit 60/100 (150x20x15mm)	Conical Spindle in Combination with Polishing Cover	15600-001		φ6" (150mm)
	158301-60/100		φ8" x 1" x ⅝", Grit 60/100 (200x25x15mm)		15800-002		φ8" (200mm)
Cup Grinding Wheel Aluminium Oxide	15640-60/100		φ6" x ¾" x ⅝", Grit 60/100 (150x20x15mm)	Belt	15876-040		φ39"x2", Grit 40 (1000x50mm)
	15840-60/100		φ8" x 1" x ⅝", Grit 60/100 (200x25x15mm)	6"& 8" Pedestal Stand for Bench Grinders	15850-110		Height 33 ½" (850mm) Base 15 ½"x13" (390x330mm) Without Dust Extraction System
Steel Wire Brush	15651-001		φ6" x ¾" x ⅝" (150x20x15mm)		15850-100		Height 33 ½" (850mm) Base 15 ½"x13" (390x330mm) With Dust Extraction System
	15861-002		φ8" x 1" x ⅝" (200x25x15mm)				



DRILL PRESS

75-010 M1 | 12" Variable Speed Drill Press

Features

- Forced opening line interrupter switch, requires machine restart in case of power failure or circuit interruption.
- Adjustable spindle tension return spring.
- Built-in laser pointer, digital spindle speed display.
- Sturdy design with cast-iron head, base, and table.
- Simple hand lever controlled mechanical variable speed from 500 to 3000 rpm.
- Industrial-quality 120 V motor.
- Equipped with easy to adjustable depth stop for complete control of both down stroke depth and up stroke travel.
- 5/8" chuck with key & convenient onboard chuck key holder.
- Easy to use see-through flip-up chuck guard included.
- Crank-operated rack and pinion table height adjustment.
- Smart LED light for better working environment.
- ETL(Electrical Testing Laboratories) certified.



LED



SMART
L E D

SMART
LASER POSITIONING



75-010 M1

SPECIFICATION

ITEM NO.	75-010 M1
SWING	12" (305 mm)
DRILLING CAPACITY	5/8" (16 mm)
CHUCK SIZE	5/8" (16 mm)
SPINDLE TRAVEL	3 1/8" (80 mm)
SPINDLE DISTANCE TO TABLE	15" (380 mm)
SPINDLE DISTANCE TO BASE	21 7/8" (556 mm)
TABLE SIZE	9 1/2" x 9 1/2" (240 x 240 mm)
COLUMN DIAMETER	2 1/2" (65 mm)
SPINDLE SPEEDS	(variable) 500 to 3000 rpm
SPINDLE TAPER	MT2
OVERALL HEIGHT	35 3/8" (900 mm)
BASE SIZE	15" x 9 5/8" (380 x 245 mm)
MOTOR	1/2 HP, 120 V, 3.2 A
WEIGHT(N.W/G.W)	75 lbs (34 kg)/81 1/2 lbs(37kg)



75-060 M1



SMART
L E D

SMART
LASER POSITIONING

Features

- Forced opening line interrupter switch, requires machine restart in case of power failure or circuit interruption.
- Adjustable spindle tension return spring.
- Built-in laser pointer, digital spindle speed display.
- Sturdy design with cast-iron head, base, and table.
- Simple hand lever controlled mechanical variable speed from 280 to 2100 rpm.
- Industrial-quality 120 V motor.
- Equipped with easy to adjustable depth stop for complete control of both down stroke depth and up stroke travel.
- 5/8" chuck with key & convenient onboard chuck key holder.
- Easy to use see-through flip-up chuck guard included.
- Crank-operated rack and pinion table height adjustment.
- Smart LED light for better working environment.
- ETL (Electrical Testing Laboratories) certified.

SPECIFICATION

ITEM NO.	75-060 M1
SWING	15" (390 mm)
DRILLING CAPACITY	3/4" (20 mm)
CHUCK SIZE	5/8" (16 mm)
SPINDLE TRAVEL	3 1/8" (80 mm)
SPINDLE DISTANCE TO TABLE	17 1/8" (435 mm)
SPINDLE DISTANCE TO BASE	26 3/4" (680 mm)
TABLE SIZE (DIAMETER)	12 3/8" (315 mm)
COLUMN DIAMETER	2 3/4" (70 mm)
SPINDLE SPEEDS	(variable) 280 to 2100 rpm
SPINDLE TAPER	MT2
OVERALL HEIGHT	42" (1065 mm)
BASE SIZE	17" x 10 1/2" (430 x 265 mm)
MOTOR	1/2 HP, 120 V, 5 A
WEIGHT(N.W/G.W)	110 lbs (49.9kg)/115 1/2 lbs(52.4 kg)

75-155 M1 | 15" Variable Speed Drill Press

Features

- Adjustable spindle tension return spring.
- Built-in laser pointer.
- Sturdy design with cast-iron head, base, and table.
- High-quality bearings for smooth, vibration-free operation.
- Simple hand lever controlled mechanical variable speed from 280 to 2100 rpm.
- Digital spindle speed display.
- Industrial-quality 120 V motor.
- ½" Chuck with key.
- Easy to use see-through flip-up chuck guard included.
- Crank-operated rack and pinion table height adjustment.
- Smart LED light for better working environment.
- Forced opening line interrupter switch, requires machine restart in case of power failure or circuit interruption.
- Equipped with easy to adjustable depth stop for complete control of both down stroke depth and up stroke travel.
- ETL(Electrical Testing Laboratories) certified.

SPECIFICATION

ITEM NO.	75-155 M1
SWING	15" (390 mm)
DRILLING CAPACITY	¾" (20 mm)
CHUCK SIZE	½" (16 mm)
SPINDLE TRAVEL	3 ⅝" (80 mm)
SPINDLE DISTANCE TO TABLE	29 ⅝" (745 mm)
SPINDLE DISTANCE TO BASE	48 ½" (1230 mm)
TABLE SIZE (DIAMETER)	12 ⅝" (315 mm)
COLUMN DIAMETER	2 ⅝" (70 mm)
SPINDLE SPEEDS	(variable) 280 to 2100 rpm
SPINDLE TAPER	MT2
OVERALL HEIGHT	63" (1600 mm)
BASE SIZE	17" x 10 ½" (430 x 265 mm)
MOTOR	½ HP, 120 V, 5 A
WEIGHT(N.W/G.W)	119 lbs (54 kg)/126½lbs(57.45kg)



SMART
L E D

SMART
LASER POSITIONING



75-155 M1



75-165 M1



SMART
L E D

SMART
LASER POSITIONING

Features

- Adjustable spindle tension return spring.
- Built-in laser pointer.
- Sturdy design with cast-iron head, base, and table.
- High-quality bearings for smooth, vibration-free operation.
- Simple hand lever controlled mechanical variable speed from 280 to 2100 rpm.
- Digital spindle speed display.
- Industrial-quality 120 V motor.
- 5/8" Chuck with key.
- Easy to use see-through flip-up chuck guard included.
- Crank-operated rack and pinion table height adjustment.
- Smart LED light for better working environment.
- Forced opening line interrupter switch, requires machine restart in case of power failure or circuit interruption.
- Equipped with easy to adjustable depth stop for complete control of both down stroke depth and up stroke travel.
- ETL(Electrical Testing Laboratories) certified.

SPECIFICATION

ITEM NO.	75-165 M1
SWING	17" (430 mm)
DRILLING CAPACITY	1 1/8" (28 mm)
CHUCK SIZE	5/8" (16 mm)
SPINDLE TRAVEL	3 3/8" (80 mm)
SPINDLE DISTANCE TO TABLE	29" (735 mm)
SPINDLE DISTANCE TO BASE	48 3/8" (1235 mm)
TABLE SIZE	13 1/4" x 13 1/4" (355 x 355 mm)
COLUMN DIAMETER	3 3/8" (80 mm)
SPINDLE SPEEDS	(variable) 280 to 2100 rpm
SPINDLE TAPER	MT3
OVERALL HEIGHT	64 3/8" (1635 mm)
BASE SIZE	20 1/4" x 12" (515 x 303 mm)
MOTOR	1 HP, 120 V, 6.5 A
WEIGHT(N.W/G.W)	161 lbs (73 kg)/172lbs(78kg)

75-710 M1 | 17" Electronic Variable Speed Drill Press

Features

- Electronic inverter variable control adjusts spindle speed from 120 to 3200 rpm.
- Front-mounted digital spindle speed display.
- Adjustable spindle tension return spring.
- Built-in laser pointer.
- Sturdy design with cast-iron head, base, and table.
- High-quality bearings for smooth, vibration-free operation.
- 1 HP industrial-quality, 120 V motor.
- 5/8" chuck with key.
- Easy to use see-through flip-up chuck guard included.
- Crank-operated rack and pinion table height adjustment.
- Smart LED light for better working environment.
- ETL(Electrical Testing Laboratories) certified.

SPECIFICATION

ITEM NO.	75-710 M1
SWING	17" (430 mm)
DRILLING CAPACITY	1 1/8" (28 mm)
CHUCK SIZE	5/8" (16 mm)
SPINDLE TRAVEL	3 1/8" (80 mm)
SPINDLE DISTANCE TO TABLE	29" (735 mm)
SPINDLE DISTANCE TO BASE	48 1/2" (1235 mm)
TABLE SIZE	13 1/4" x 13 1/4" (335 x 335 mm)
COLUMN DIAMETER	3 1/8" (80 mm)
SPINDLE SPEEDS (VARIABLE)	120 to 480 rpm/280 to 1200 rpm/740 to 3200 rpm
SPINDLE TAPER	MT3
OVERALL HEIGHT	64 1/2" (1635 mm)
BASE SIZE	20 1/4" x 12" (515 x 303 mm)
MOTOR	1 HP, 120 V, 1 Ph
WEIGHT(N.W/G.W)	183lbs (83 kg)/195lbs(88.6kg)



SMART
L E D

SMART
LASER POSITIONING



75-710 M1



75-510 M1



SMART
L E D

SMART
LASER POSITIONING

Features

- Adjustable spindle tension return spring.
- Built-in laser pointer, digital spindle speed display.
- Sturdy design with cast-iron head, base, and table.
- Simple hand lever controlled mechanical variable speed from 280 to 2100 rpm.
- Industrial-quality 120 V motor, ¾" chuck with key.
- Easy to use see-through flip-up chuck guard included.
- Smart LED light for better working environment.
- ETL(Electrical Testing Laboratories) certified.

SPECIFICATION

ITEM NO.	75-510 M1
SWING	20" (515 mm)
DRILLING CAPACITY	1 ¼" (32 mm)
CHUCK SIZE	¾" (20 mm)
SPINDLE TRAVEL	4 ¾" (120 mm)
SPINDLE DISTANCE TO TABLE	27 ¾" (705 mm)
SPINDLE DISTANCE TO BASE	46 ⅞" (1190 mm)
TABLE SIZE	18 ¾" x 16 ¾" (475 x 425 mm)
COLUMN DIAMETER	3 ⅝" (92 mm)
SPINDLE SPEEDS	(variable) 280 to 2100 rpm
SPINDLE TAPER	MT3
OVERALL HEIGHT	65½" (1665 mm)
BASE SIZE	23 ⅞" x 15 ¾" (600 x 400 mm)
MOTOR	1 HP, 120 V, 10 A
WEIGHT(N.W/G.W)	254 lbs (115.2 kg)/271lbs(123kg)



BAND SAW





90-030 M1

SMART
L E D

Features

- Sturdy welded steel frame & precision-balanced wheels with replaceable tires.
- Easy-to-assemble open-based steel stand.
- Precision blade guide bearings included.
- Miter guage with auxiliary aluminum cross cut support & aluminum rip fence included.
- Quick-release blade tension for fast blade changes.
- Hinged doors and easily accessible blade tension knob for fast blade changes and adjustments.
- Large stable cast-iron table with slide-out steel extension wing.
- Includes LED goose-neck style worklight.
- Smooth running durable ½ HP TEFC motor.
- Convenient blade tracking window.
- Safety lock-out switch with removable key to prevent unauthorized use.
- Multi-size dust port fits 4", 3", or 2" hose.
- ETL (Electrical Testing Laboratories) certified.

SPECIFICATION

ITEM NO.	90-030 M1
WHEEL SIZE	10" (254 mm)
WHEEL SPEEDS	1134 rpm
BLADE SPEEDS	2920 lin. fpm
BLADE WIDTH	⅝" to ½" (3 to 12 mm)
BLADE LENGTH	67 ½" (1712 mm)
TABLE SIZE	13 ⅜" x 13 ⅝" (340 x 335 mm)
TABLE TILT	0° to 45° (right)
TABLE HEIGHT	42" (1067 mm)
MAXIMUM WIDTH OF CUT	9 ⅝" (245 mm)
MAXIMUM DEPTH OF CUT	4 1/16" (103 mm)
DUST OUTLET	2", 3" & 4" (51, 76 & 102 mm)
BASE DIMENSIONS (L x W)	15 ½" x 12 ½" (395 x 310 mm)
MOTOR	½ HP, 120 V, 3.4 A
WEIGHT(N.W/G.W)	83½lbs(38kg)88 lbs (40 kg)

90-040 M1 | 12" Wood Cutting Bandsaw

Features

- Sturdy welded steel frame & precision balanced wheels with replaceable tires.
- Easy-to-assemble open-base steel stand.
- Precision easy-adjust European style blade guide bearings included.
- Two cutting speeds for excellent results in either hard or soft woods.
- Miter gauge with aluminum crosscut fence included.
- Deluxe dual-position rip fence system.
- Hinged doors and easily accessible blade tension knob, for fast blade changes and adjustments.
- Extra-large 21 ½" x 15 ¾" cast-iron table.
- Smooth running heavy-duty ¾ HP TEFC motor.
- Safety lock-out switch with removable key to prevent unauthorized use.
- Multi-size dust port fits 4", 3", or 2" hose.
- Goose neck LED style worklight.
- ETL(Electrical Testing Laboratories)certified.

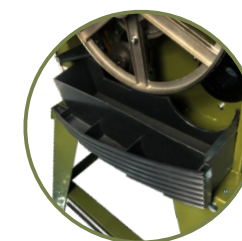
SPECIFICATION

ITEM NO.	90-040 M1
WHEEL SIZE	12" (315 mm)
WHEEL SPEEDS (2)	445 & 970 rpm
BLADE SPEEDS (2)	1444 & 3150 lin. Fpm
BLADE WIDTH	⅝" to ¾" (3 to 19 mm)
BLADE LENGTH	88" (2240 mm)
TABLE SIZE	21 ½" x 15 ¾" (548 x 400 mm)
TABLE TILT	0° to 45° (right)
TABLE HEIGHT	37 ¾" (950 mm)
MAXIMUM WIDTH OF CUT	12" (305 mm)
MAXIMUM DEPTH OF CUT	6 ½" (165 mm)
DUST OUTLET	2", 3" & 4" (51, 76 & 102 mm)
BASE DIMENSIONS (L x W)	18 ¼" x 15 ¾" (465 x 400 mm)
MOTOR	¾ HP, 120 V, 6.4 A
WEIGHT(N.W/G.W)	158¼lbs(72kg)/165 lbs (75 kg)



90-040 M1

SMART
L E D



Dust Box



90-120 M1

SMART
L E D



Features

- Sturdy welded steel frame & precision balanced wheels with replaceable tires.
- Sturdy closed base steel stand.
- Deluxe blade guide bearings included.
- Precision metal miter gauge and aluminum rip fence ..
- Two cutting speeds for excellent results in either hard or soft woods.
- Deluxe dual-position rip fence system.
- Hinged doors and easily accessible blade tension knob, for fast blade changes and adjustments.
- Extra-large 21 ½" x 15 ¾" cast-iron table.
- Smooth running heavy-duty 1 HP TEFC motor.
- Safety lock-out switch with removable key to prevent unauthorized use.
- Goose neck LED style worklight.
- ETL(Electrical Testing Laboratories)certified.

SPECIFICATION

ITEM NO.	90-120 M1
WHEEL SIZE	14" (350 mm)
WHEEL SPEEDS (2)	436 & 909 rpm
BLADE SPEEDS (2)	1575 & 3280 lin. fpm
BLADE WIDTH	⅝" to ¾" (3 to 19 mm)
BLADE LENGTH	100 ¾" (2560 mm)
TABLE SIZE	21 ½" x 15 ¾" (548 x 400 mm)
TABLE TILT	0° to 45° (right)
TABLE HEIGHT	39 ⅝" (950 mm)
MAXIMUM WIDTH OF CUT	13 ⅝" (340 mm)
MAXIMUM DEPTH OF CUT	9" (230 mm)
DUST OUTLET	4" (102 mm)
BASE DIMENSIONS (L X W)	22 ⅞" x 17 ⅞" (580 x 440 mm)
MOTOR	1 HP, 120 V, 9.5 A
WEIGHT(N.W/G.W)	194 lbs (88 kg)/207¼(94kg)



WOOD LATHE





160 M1



Mechanical Variable Speed

Includes

Spur center(#1632SA)
Live center MT2(#2651-1)
6" diameter faceplate(#1636)
12" (#166)tool rest
Tool rest carriage(#264SA)

Optional Accessories

3" diameter faceplate(#1637)
Knockout bar(#2644)

Features

- Mechanical variable speed from 500-3000rpm.
- High quality ribbed cast-iron head stock, tail stock, and bed reduces motor vibration for decreased noise and added precision.
- Precision-machined bed guideway allow the tail stock and tool rest to slide smoothly.
- Precision-machined, high quality steel spindle, mounted on sealed, permanently lubricated bearings.
- Equipped with plunger-type pin indexing mechanism for reeding and fluting.
- Spindle nose is threaded $\frac{5}{8}$ " at both ends and bored for a "Morse No.2" taper.
- Removable head stock cover for access to the spindle and indexing mechanism.
- Powerful North American designed, totally enclosed, fan cooled industrial motor.
- Safety lock-out switch with removable key to prevent unauthorized use.
- Increase or decrease speed without stopping the machine by using the front mounted control lever.
- Locking cabinet for all your turning tools.
- Spindle Lock.
- Acme threads on tail stock for smoother operation.
- ETL(Electrical Testing Laboratories)Certified.

SPECIFICATION

ITEM NO.	160 M1
SWING-OVER BED CAPACITY	12" (305mm)
SWING-OVER GAP CAPACITY	15" (381 mm)
MAXIMUM DISTANCE BETWEEN CENTERS	38" (965 mm)
FLOOR TO SPINDLE CENTER	41" (1041 mm)
NOSE-INBOARD & NOSE-OUTBOARD (RIGHT-HAND THREADS OR LEFT-HAND THREADS)	1" (25.4 mm) - 8 tpi
SPINDLE BORE	$\frac{5}{8}$ " (16 mm)
HEADSTOCK & TAILSTOCK TAPER	MT 2
TAILSTOCK SPINDLE TRAVEL	2" (50.8 mm)
SPINDLE SPEEDS	(variable) 500 to 3000 rpm
MOTOR	1 HP, 120 V, 1 Ph, 12.8 A
WEIGHT	282 lbs(128kg)



JOINTER





480 M1

Features

- Three high speed steel knives provide a superior finish.
- Heavy-duty cast iron infeed and outfeed tables with precision machined finish.
- Built-in rabbeting ledge adds versatility.
- Two-way tilting fence with positive stops at 45° and 90°.
- Heavy-duty table adjustment handwheel has a locking knob for quick, easy and secure table height corrections.
- Magnetic emergency stop safety switch to prevent unwanted or unintentional start-up.
- Heavy duty one piece closed stand.
- Built in 4" dust chute.
- Powerful 1½HP motor.
- ETL(Electrical Testing Laboratories)Certified.
- Tall cast iron fence provides added support.

SPECIFICATION

ITEM NO.	480 M1
CUTTING DEPTH	½" (12.7mm)
CUTTING WIDTH	8" (203mm)
FENCE TILTING LEFT TO RIGHT	-45°to 45°
FENCE	4"x33¾" (101.6x860mm)
LENGTH OF TABLE	63¾" (1620mm)
HEIGHT OF TABLE	33" (830mm)
CUTTING CIRCLE	3¾" (82.5mm)
CUTTING-HEAD SPEED	4500 rpm/ 13500 cuts/Min.
WIDTH	24½" (622mm)
LENGTH	63¾" (1620mm)
HEIGHT	39¾" (997mm)
MOTOR	1½ HP,115V,1 Ph
SPEED	1760rpm
WEIGHT	480lbs (218kg)



TABLE SAW





350M1



Magnetic Emergency
Stop Safety Switch



Cast Iron Handwheel



Independent
Side Safety Guard

Features

- Bringing back the General CLASSIC Table saws with several improvements from the previous models.
- Totally enclosed, fan cooled industrial motor---3HP/1PH, 5HP/3PH .
- Powder coated, scratch resistant, high quality reinforced steel cabinet.
- High-precision General "T" Fence System with 52" and 36" long guide rails which could be mounted on both left and right side.
- Melamine extension table and adjustable support legs .
- Large, heavy-duty chrome plated hand wheels for smooth movement.
- Arbor mounted on heavy-duty trunion with permanently lubricated, sealed ball-bearings.
- 2 miter gauge T-slots and deluxe aluminium miter gauge.
- Beveled edge on front of table and table wings.
- Independent side safety guard; Precision ground high luster cast iron table.
- Hinged motor cover, allows quick access to motor and belts.
- Built in 4" dust collection port; One piece box style trunion.
- Matching dual V-belt drive, on balanced cast-iron pulleys for smooth vibration-free running.
- ETL(Electrical Testing Laboratories)certified.

SPECIFICATION

ITEM NO.	350 M1(Right Tilt)
BLADE/ARBOR DIAMETER	10" (254 mm)/ $\frac{1}{2}$ " (16 mm)
ARBOR TILTING RANGE	0° to 45°
ARBOR SPEED	4000 rpm
MAXIMUM DEPTH OF CUT AT 90°/45°	3 $\frac{1}{8}$ " (79 mm)/2 $\frac{1}{8}$ " (54 mm)
MAXIMUM RIP TO LEFT OF BLADE	12" (305 mm)
MAXIMUM RIP TO RIGHT OF BLADE	52" (1320 mm)/36"(914mm)
MAXIMUM DADO WIDTH	13/16" (21 mm)
DISTANCE AHEAD OF BLADE	12 $\frac{3}{4}$ " (324 mm)
TABLE SIZE	28" x 36"x34" (711 x 914x864mm)
SIZE OF T-SLOT	$\frac{3}{8}$ " x $\frac{3}{4}$ " (10 x 19 mm)
MOTOR	3HP 230V 1Ph / 5HP 230V/460V 3Ph
WEIGHT(N.W/G.W)	489 $\frac{1}{2}$ lbs (222 kg)/581 $\frac{1}{2}$ lbs (263.7 kg)

650 M1 | 10" Deluxe Cabinet Saw (Left Tilt)

Features

- Bringing back the General CLASSIC Table saws with several improvements from the previous models.
- Totally enclosed, fan cooled industrial motor---3HP/1PH, 5HP/3PH .
- Powder coated, scratch resistant, high quality reinforced steel cabinet.
- High-precision General "T" Fence System with 52" and 36" long guide rails which could be mounted on both left and right side.
- Melamine extension table and adjustable support legs .
- Large, heavy-duty chrome plated hand wheels for smooth movement.
- Arbor mounted on heavy-duty trunion with permanently lubricated, sealed ball-bearings.
- 2 miter gauge T-slots and deluxe aluminium miter gauge.
- Beveled edge on front of table and table wings.
- Independent side safety guard; Precision ground high luster cast iron table.
- Hinged motor cover, allows quick access to motor and belts.
- Built in 4" dust collection port; One piece box style trunion.
- Matching dual V-belt drive, on balanced cast-iron pulleys for smooth vibration-free running.
- ETL(Electrical Testing Laboratories)certified.



650M1

SPECIFICATION

ITEM NO.	650 M1(Left Tilt)
BLADE/ARBOR DIAMETER	10" (254 mm)/ $\frac{5}{8}$ " (16 mm)
ARBOR TILTING RANGE	0° to 45°
ARBOR SPEED	4000 rpm
MAXIMUM DEPTH OF CUT AT 90°/45°	3 $\frac{1}{8}$ " (79 mm)/2 $\frac{1}{2}$ " (54 mm)
MAXIMUM RIP TO LEFT OF BLADE	12" (305 mm)
MAXIMUM RIP TO RIGHT OF BLADE	52" (1320 mm)/36"(914mm)
MAXIMUM DADO WIDTH	13/16" (21 mm)
DISTANCE AHEAD OF BLADE	12 $\frac{3}{4}$ " (324 mm)
TABLE SIZE	28" x 36"x 34" (711 x 914 x864 mm)
SIZE OF T-SLOT	$\frac{3}{8}$ " x $\frac{3}{4}$ " (10 x 19 mm)
MOTOR	3HP 230V 1Ph / 5HP 230V/460V 3Ph
WEIGHT(N.W/G.W)	489 $\frac{1}{2}$ lbs (222 kg)/581 $\frac{1}{2}$ lbs (263.7 kg)

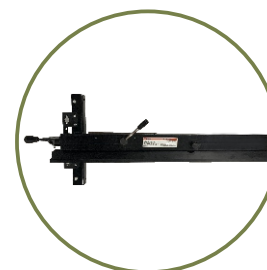
Rail Set could be mounted on both left and right side.



36"Rail Set #850-RS36



52"Rail Set #850-RS52



Rip Fence for 350/650
#650-F



Wood Table
#850-36T



Wood Table and Legs
#850-52T



*Patent pending

SMART
Auto Digital Tablesaw

850M1

Features

- New! AUTO Fence by General Design to achieve electronic movement , auto tilt and blade lifting by LCD touch control display.
- Totally enclosed, fan cooled industrial motor----3HP/1PH, 5HP/3PH .
- Auto Fence electronic control system is connected to a programmable controller , and the input value includes Saw blade angel, saw blade height and cutting width which could achieve accurate horizontal movement and blade tilt and lifting by LCD touch control.
- Powder coated, scratch resistant, high quality reinforced steel cabinet.
- High-precision General "T" Fence System with 52"and 36" long guide rails .
- Rip Fence and guide rail could be mounted on both left and right side.
- Melamine extension table and adjustable support legs .
- 2 miter gauge T-slots and deluxe aluminium miter gauge.
- Magnetic emergency stop safety switch to prevent unwanted or unintentional start-up.



Two Stepping Motor



Left Tilt



36"Rail Set #850-RS36



52"Rail Set #850-RS52

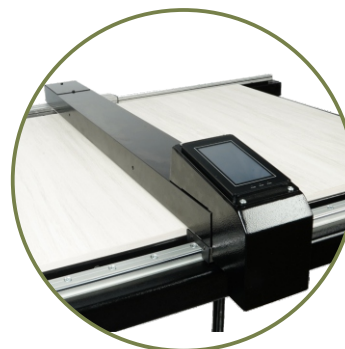


Wood Table
#850-36T

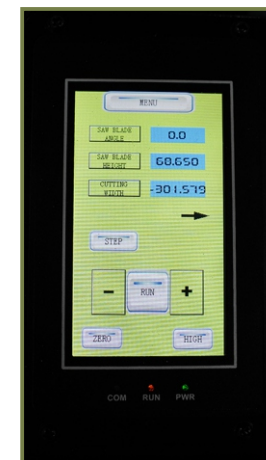


Wood Table and Legs
#850-52T

- Arbor mounted on heavy-duty trunion with permanently lubricated, sealed ball-bearings.
- Beveled edge on front of table and table wings.
- Independent side safety guard.
- Precision ground high luster cast iron table.
- Hinged motor cover, allows quick access to motor and belts.
- Built in 4" dust collection port.
- One piece box style trunion.
- Matching dual V-belt drive, on balanced cast-iron pulleys for smooth vibration-free running.
- Electronic Retro Fit Fence for other table saws.
- ETL(Electrical Testing Laboratories)certified.



Electronic Fence
*Patent pending



LCD Touch Control
Display

- Electronically adjust
- Saw Blade Angle
 - Saw Blade Height
 - Cutting Width

NEW!

SPECIFICATION

ITEM NO.	850 M1(Left Tilt)
BLADE DIAMETER	10" (254 mm)
ARBOR DIAMETER	⅝" (16 mm)
ARBOR TILTING RANGE	0° to 45°
ARBOR SPEED	4000 rpm
MAXIMUM DEPTH OF CUT AT 90°	3 ⅛" (79 mm)
MAXIMUM DEPTH OF CUT AT 45°	2 ⅞" (54 mm)
MAXIMUM RIP TO LEFT OF BLADE	12" (305 mm)
MAXIMUM RIP TO RIGHT OF BLADE	52" (1320 mm)/36" (914mm)
MAXIMUM DADO WIDTH	13/16" (21 mm)
DISTANCE AHEAD OF BLADE	12 ¾" (324 mm)
TABLE SIZE	28" x 36" (711 x 914 mm)
TABLE HEIGHT	34" (864 mm)
SIZE OF T-SLOT	⅝" x ¾" (10 x 19 mm)
MOTOR	3HP 230V 1Ph / 5HP 230V/460V 3Ph
WEIGHT(N.W/G.W)	576lbs (261.3 kg)/661⅞ lbs (300 kg)



- Electronic Fence could be mounted on both left and right side .

NEW!

Features

- New! Retro Electronic Fence by General Design to achieve electronic movement by LCD touch control display.
- Electronic fence system comes in two sizes with different guide rail length which could achieve maximum rip to right of blade 36" and 52".
- Auto fence can be retro-fit to your existing table saw with table width 27",28",29" and 30".
- Auto Fence electronic control system is connected to a programmable controller with wide voltage input from 100V~250V , when you input value of cutting width which could achieve accurate horizontal movement with positioning accuracy 0.001" and repeatable positioning accuracy 0.01".
- Rip Fence could be easily mounted on both left and right side.

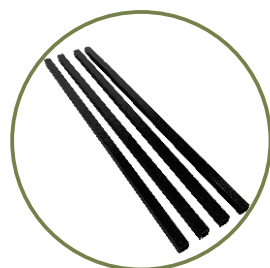


850-RF-36
850-RF-52

SMART
Auto Digital Rip Fence System



LCD Touch Control Display



Adjustable Tube

SPECIFICATION

ITEM NO.	850-RF-36	850-RF-52M1
MAXIMUM RIP TO RIGHT OF BLADE	36"(914mm)	52" (1320 mm)
RAIL LENGTH	69"(1760mm)	85"(2160mm)
MAXIMUM DISTANCE BETWEEN RAILS	30½"(775mm)	
VOLTAGE	100V~250V	
POWER	2.2 A	
POSITIONING ACCURACY	0.001"(0.03 mm)	
REPEATABLE POSITIONING ACCURACY	0.01" (0.3 mm)	
ADJUSTABLE TUBE SIZE (4PCS)	1" x1"x36"(25.4mmx25.4mmx918 mm)	
WEIGHT(N.W)	147lbs (66.65kg)	157½ lbs (71.6 kg)
WEIGHT(G.W)	217¼lbs(98.55kg)	240¾(109.2kg)

Deluxe Cabinet Saw

ITEM NO	TILT	MAXIMUM RIP TO RIGHT OF BLADE							
			MOTOR	36" RIP CAPACITY RAILS	52" RIP CAPACITY RAILS	FENCE	SHORT TABLE	LONG TABLE	ADJ. LEGS SET
350-3-52	Right	52"	3HP, 1PH		●	●		●	●
350-3-36	Right	36"	3HP, 1PH	●		●	●		
350-5/3-52	Right	52"	5HP, 3PH		●	●		●	●
350-5/3-36	Right	36"	5HP, 3PH	●		●	●		
650-3-52	Left	52"	3HP, 1PH		●	●		●	●
650-3-36	Left	36"	3HP, 1PH	●		●	●		
650-5/3-52	Left	52"	5HP, 3PH		●	●		●	●
650-5/3-36	Left	36"	5HP, 3PH	●		●	●		
850-3-52	Left	52"	3HP, 1PH		●	●		●	●
850-3-36	Left	36"	3HP, 1PH	●		●	●		
850-5/3-52	Left	52"	5HP, 3PH		●	●		●	●
850-5/3-36	Left	36"	5HP, 3PH	●		●	●		



SCROLL SAW



Features

- Head tilts 38° left and 45° right, tilting the blade, not the table; keeping the workpiece level for better control & more accurate cuts.
- Upper and lower blade guard assembly helps prevent accidental hand contact with the blade.
- Switch protection device to prevent unintentional start-up.
- Dust collector table kit for direct dust extraction hook-up.
- 21" throat capacity, 2" cutting thickness capacity.
- Large 13 ½" x 23 ½" table surface.
- Quick blade changes with finger-operated blade clamps: no tools required.
- Easy-access speed and tension controls.
- Onboard dust blower, organized blade storage on base.
- ETL(Electrical Testing Laboratories) Certified.

Kit consists of 1 each

- Scroll Saw (#EX-21)
- 6 ½ft. (2 m) 16 gauge power cord.
- Adjustable metal stand (#EX-21BS)
Four positions from 24 ½" to 31 ½" high (622 to 800mm high).

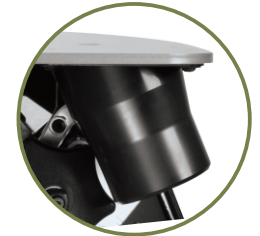
- Foot switch (#EX-01)
Enjoy hands-free on/off control with scroll saws.
Features constant "off" mode, press and hold down the switch to turn "on", simply lift foot from switch to turn "off".

SPECIFICATION

ITEM NO.	EX-21 K
LENGTH	32" (812 mm)
WIDTH	15" (380 mm)
HEIGHT	15" (380 mm)
HEAD TILT RANGE	38° (left) to 45°(right)
THROAT CAPACITY	21" (535 mm)
MAXIMUM CUTTING DEPTH	2" (51 mm)
SPEED	(variable) 400 to 1550 strokes/min
TABLE SURFACE	13½" x 23½"(345 x 597 mm)
MOTOR	0.2 HP,120 V, 1.3 A
WEIGHT(N.W/G.W)	85¼lbs(38.9kg)/99¼lbs(45.3kg)



EX-21K

Direct Dust
Extraction Hook-upUpper and Lower
Blade Guards

Tilting Head



EX-16K



Direct Dust
Extraction Hook-up



Upper and Lower
Blade Guards



Tilting Head

Features

- Head tilts 30° left and 45° right, tilting the blade, not the table;
- Upper and lower blade guard assembly helps prevent accidental hand contact with the blade.
- Switch protection device to prevent unintentional start-up.
- Dust collector table kit for direct dust extraction hook-up.
- Keeping the workpiece level for better control & more accurate cuts.
- 16" throat capacity, 2" cutting thickness capacity.
- Large 12" x 18 1/2" table surface.
- Quick blade changes with finger-operated blade clamps: no tools required.
- Easy-access speed and tension controls, onboard dust blower.
- ETL(Electrical Testing Laboratories)Certified.

Kit consists of 1 each

- Scroll Saw(#EX-16)
- 6 1/2 ft. (2 m) 16 gauge power cord.
- Adjustable metal stand(#EX-21BS)
Four positions from 24 1/2" to 31-1/2" high (622 to 800 mm high)
- Foot switch(#EX-01)
Enjoy hands-free on/off control with scroll saws.
Features constant "off" mode, press and hold down the switch to turn "on", simply lift foot from switch to turn "off".

SPECIFICATION

ITEM NO.	EX-16K
LENGTH	27" (686 mm)
WIDTH	15" (380 mm)
HEIGHT	17" (432 mm)
HEAD TILT RANGE	30° (left) to 45° (right)
THROAT CAPACITY	16" (406 mm)
MAXIMUM CUTTING DEPTH	2" (51 mm)
SPEED	(variable) 400 to 1400 strokes/min
TABLE SURFACE	12" x 18-1/2" (305 x 470 mm)
MOTOR	0.2 HP,120 V, 1.3 A
WEIGHT(N.W/G.W)	74½lbs(33.9kg)/88½lbs(40.3kg)

Features

- Head tilts 38° left and 45° right, tilting the blade, not the table; keeping the workpiece level for better control & more accurate cuts.
- Upper and lower blade guard assembly helps prevent accidental hand contact with the blade.
- Switch protection device to prevent unintentional start-up.
- Dust collector table kit for direct dust extraction hook-up.
- 21" throat capacity, 2" cutting thickness capacity.
- Large 13 ½" x 23 ½" table surface.
- Quick blade changes with finger-operated blade clamps: no tools required.
- Easy-access speed and tension controls.
- Onboard dust blower, organized blade storage on base.
- ETL(Electrical Testing Laboratories) Certified.

Includes

- Scroll Saw(#EX-21)
- Foot switch (#EX-01)
- 6 ½ ft. (2 m) 16 gauge power cord.

Optional Accessories

Adjustable metal stand(#EX-21 BS).

SPECIFICATION

ITEM NO.	EX-21
LENGTH	32" (812 mm)
WIDTH	15" (380 mm)
HEIGHT	15" (380 mm)
HEAD TILT RANGE	38° (left) to 45° (right)
THROAT CAPACITY	21" (535 mm)
MAXIMUM CUTTING DEPTH	2" (51 mm)
SPEED	(variable) 400 to 1550 strokes/min
TABLE SURFACE	13-1/2" x 23-1/2" (345 x 597 mm)
MOTOR	0.2 HP, 120 V, 1.3 A
WEIGHT(N.W/G.W)	65 lbs(29.5kg)/78½(35.5kg)



EX-21



Direct Dust
Extraction Hook-up



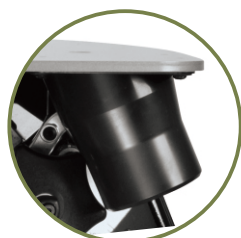
Upper and Lower
Blade Guards



Tilting Head



EX-16



Direct Dust
Extraction Hook-up



Upper and Lower
Blade Guards



Tilting Head

Features

- Head tilts 30° left and 45° right, tilting the blade, not the table.
- Upper and lower blade guard assembly helps prevent accidental hand contact with the blade.
- Switch protection device to prevent unintentional start-up.
- Dust collector table kit for direct dust extraction hook-up.
- Keeping the workpiece level for better control & more accurate cuts.
- 16" throat capacity, 2" cutting thickness capacity.
- Large 12" x 18 ½" table surface.
- Quick blade changes with finger-operated blade clamps: no tools required.
- Easy-access speed and tension controls, onboard dust blower.
- ETL (Electrical Testing Laboratories) Certified.

Optional Accessories

Foot switch (#EX-01).

Adjustable metal stand (#EX-21 BS).

SPECIFICATION

ITEM NO.	EX-16
LENGTH	27" (686 mm)
WIDTH	15" (380 mm)
HEIGHT	17" (432 mm)
HEAD TILT RANGE	30° (left) to 45° (right)
THROAT CAPACITY	16" (406 mm)
MAXIMUM CUTTING DEPTH	2" (51 mm)
SPEED	(variable) 400 to 1400 strokes/min
TABLE SURFACE	12" x 18 ½" (305 x 470 mm)
MOTOR	0.2 HP, 120 V, 1.3 A
WEIGHT(N.W/G.W)	54 lbs(24.5 kg)/67½(30.5kg)

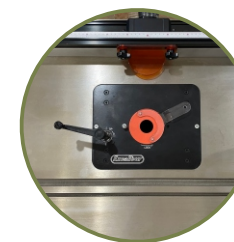


ROUTER TABLE

**40-200C**

Features

- Heavy-duty cast iron table, massive router lift with 9 ¼" x 11 ¾" and aluminum top plate.
- Stable four post/lift screw design & chain drive lifting system controlling all four corners simultaneously.
- Smooth above-the-table adjustment mechanism for fast tool changes & precision bit setting.
- Fence has a 2 ¼" dust collection outlet and adjustable scales.
- Some router models may require reducer collars / adaptors.
- Includes s 2 ¼" dust hose and two hose clamps.
- Fits all fixed base router motors.
- Under table steel dust enclosure with access door, adjustable air vent, power cord grommet and 4" dust port with 2 ¼" branch inlet to the fence.
- Stand made of tubular steel, includes mobility kit, adjustable leveling feet and easy access on/off safety switch with removable lock-out key.
- ETL(Electrical Testing Laboratories) Certified.

**Stand Caster Pedal****Top View**

40-200C | Deluxe Router Table Kit

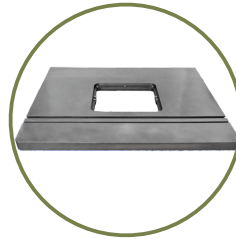
Excalibur



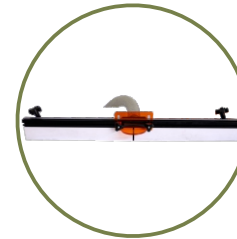
Dust Collection Kit
#40-130



Router Lift
#40-125



Cast Iron Table
#40-075



Router Fence
#40-080



Stand
#40-085



SPECIFICATION

ITEM NO.	40-200C
OVERALL DIMENSIONS	43 7/8" x 26 3/8" x 42" (1115 x 671 x 1066 mm)
TABLE SIZE (L x W x H)	24" x 32" x 15 3/8" (609 x 812 x 39 mm)
TABLE HEIGHT	37 7/8" (960 mm)
FENCE SIZE (EACH)	35 7/8" x 4 1/8" x 3 1/2" (910 x 105 x 90 mm)
MAXIMUM FENCE TRAVEL	9" (229 mm)
DUST OUTLET	4" (102 mm)
DISTANCE BETWEEN T-SLOT & SPINDLE CENTER	3/4": 6" (152 mm) / 3/8": 7 1/4" (183 mm)
DISTANCE FROM SPINDLE CENTER TO FRONT EDGE OF TABLE	12" (305 mm)
T-SLOT DIMENSIONS	3/4" x 3/8" (19 x 10 mm) / 3/8" x 1/4" (10 x 7 mm)
ROUTER INSERT PLATE	9 1/4" x 11 3/4" (235 x 298 mm)
TABLE OPENING SIZES (DIAMETER)	(Plate) 3 3/4" (95 mm) / (Insert ring) 1 1/2" (38 mm)
WEIGHT(N.W/G.W)	178 1/2 lbs (81 kg) / 185 lbs (84 kg)



CNC MACHINE



Features

- New! Renowned Excalibur By General design expertise now available in CNC technology.
- Control Panel Steel enclosure Included.
- Masso HTG5A15 upgradable Controller includes Masso software. No external operating PC required!(Requires monitor and USB Keyboard).
- Smooth and accurate ball screw transmission on all axis.
- Powerful 550W variable frequency motor for excellent performance and low maintenance.
- Variable cutting up to 118 inches per minute.
- Spindle speeds up to 24,000 rpm with automatic spindle ON/OFF control.
- Positional accuracy up to +/-0.004 inches.
- Aluminum table with integrated hold down clamps.

SPECIFICATION

ITEM NO.	EC-617 K
X AXIS CUTTING CAPACITY	16" (406 mm)
Y AXIS CUTTING CAPACITY	24" (610 mm)
Z AXIS CUTTING CAPACITY	6" (152 mm)
POSITIONAL ACCURACY	±0.004" (± 0.1 mm)
OVERALL DIMENSIONS MACHINE ONLY(W x L x H)	27¼"x38½"x27½"(704x980x700 mm)
WITH STAND(W x L x H)	40½"x31½"x55½"(1020x800x1400 mm)
WITH STAND & ENCLOSURE(W x L x H)	32¼"x43¼"x56¼"(820x1100x1430 mm)
SPINDLE SPEED	0 - 24,000 tr/min
MOTOR	550W/variable frequency motor
TABLE MATERIAL	Aluminium
TABLE SIZE	38"x22"
PROGRAMMING SOFTWARE INCLUDED	MASSO HTG5A15 Controller
CUTTING SPEEDS	Variable - Up to 118" per minute
INPUT POWER REQUIREMENTS	110/115V - 9A
COLLETS (HOW MANY & SIZES INCLUDED)	1x¼" (6 mm)
WEIGHT(N.W/G.W)	264½lbs(120kg)/308 lbs (140 kg)



i-Carver



EC-617 K

Includes



CNC Table
#EC-617M1



CNC Controller Panel
#EC-617FSB



Safety Enclosure
#EC-617X



Stand and Dust
Collection System
#EC-617BSD

NEW!



i-Carver



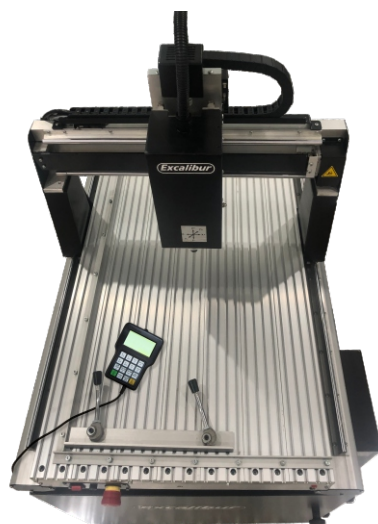
EC-617 HCK



The RichAuto A11
Handheld Controller
#EC-617FSB HC

Includes

- CNC Table(#EC-617M1)
- Safety Enclosure(#EC-617X)
- Stand and Dust Collection System(#EC-617BSD)
- Handheld Controller (#EC-617FSB HC)



Features

- New! Renowned Excalibur By General design expertise now available in CNC technology.
- Simply transfer your file to the handheld controller via USB storage device. The handheld controller is a powerful, lightweight and easy to use controller with over a decade of proven results in demanding applications. No external operating PC required!
- Smooth and accurate ball screw transmission on all axis.
- Powerful 550W variable frequency motor for excellent performance and low maintenance. Variable cutting up to 118 inches per minute.
- Spindle speeds up to 24,000 rpm with automatic spindle ON/OFF control.
- Positional accuracy up to +/-0.004 inches.
- Aluminum table with integrated hold down clamps.

SPECIFICATION

ITEM NO.	EC-617 HCK
X AXIS CUTTING CAPACITY	16" (406 mm)
Y AXIS CUTTING CAPACITY	24" (610 mm)
Z AXIS CUTTING CAPACITY	6" (152 mm)
POSITIONAL ACCURACY	±0.004" (± 0.1 mm)
OVERALL DIMENSIONS MACHINE ONLY(W x L x H)	27-¾"x38½"x27½"(704x980x700 mm)
WITH STAND(W x L x H)	40½"x31½"x55½"(1020x800x1400 mm)
WITH STAND & ENCLOSURE(W x L x H)	32¼"x43¼"x56¼"(820x1100x1430 mm)
SPINDLE SPEED	0 - 24,000 tr/min
MOTOR	550 watts/variable frequency motor
TABLE MATERIAL	Aluminium
TABLE SIZE	38"X22"
PROGRAMMING SOFTWARE INCLUDED	The Rich Auto A1X Handheld controller
CUTTING SPEEDS	Variable - Up to 118" per minute
INPUT POWER REQUIREMENTS	110/115V - 9A
COLLETS (HOW MANY & SIZES INCLUDED)	1x¼" (6 mm)
WEIGHT(N.W/G.W)	264½lbs(120kg)/308 lbs (140 kg)

NOTES

[illegible]

USA

6243 Industrial PKWY, Whitehouse, OH 43571, USA.
Service: 844 877 5234 (toll-free), 419 877 5234

Canada

BSI Distributor Source Inc.
120 Wellington St. N. Unit 3A Thorold, ON, L2V5E7
Service: 866.987.2855

E-mail: customerservice@gipowerprodusts.com
www.general.ca • www.gipowerproducts.com • www.excaliburpowertool.com

