

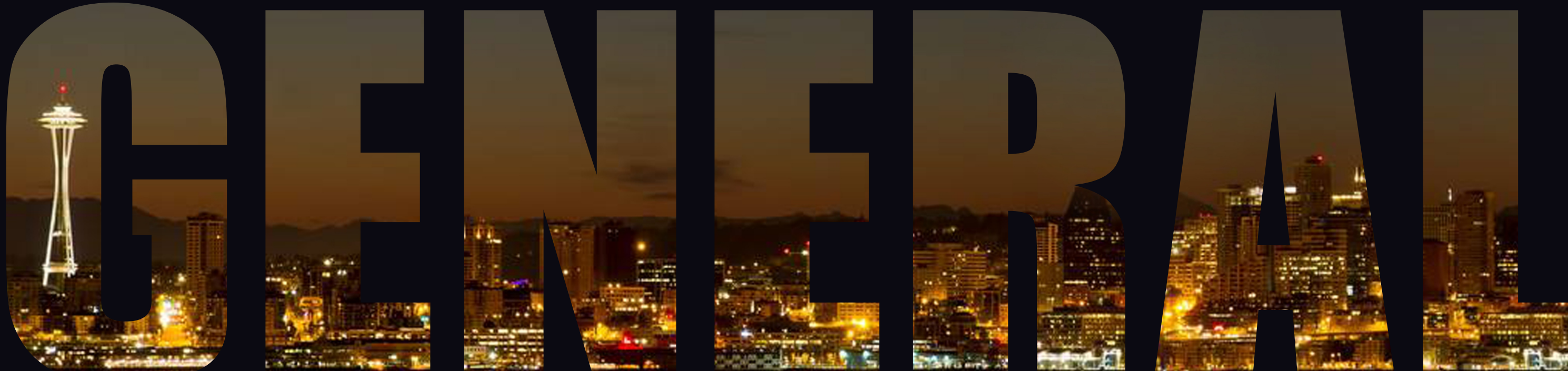


Excalibur



WOODWORKING & METALWORKING MACHINERY

SINCE 1946



Who We Are

General is an Innovator & manufacturer of woodworking, metalworking, & air power equipment solutions. Our products engineered to increase performance in the home & commercial workplace. Our long history, combined with an endless dedication to quality, safety, and service, are the industry leading qualities that transition General prospects into lifetime customers. The long term growth and success of General lies in our vertically integrated and, low cost, innovative manufacturing capabilities combined with an ability to quickly respond to you and your customer's dynamic needs. Our corporate team will listen to all your needs and suggestions to create tools and accessories that the market demands and quicker than our competition. The General Sales network provides personal localized field sales expertise domestically and internationally.

Our History

In 1946, following the end of World War II, General established several manufacturing facilities in Montreal Canada to produce high quality Commercial/Industrial woodworking & metalworking machinery. During the past 70 years, the General name grew to represent several generations of technical, high precision equipment. In 2003 General acquired the "Excalibur" brand of scroll saws and woodworking accessories. The 2014 acquisition of General by one of the largest Global manufacturers of woodworking machinery, metalworking machinery & air compressors created the perfect combination of North America market expertise and large scale manufacturing capabilities. Today, General International's branded "Green Line" of Industrial Products is considered to be the gold standard of woodworking and metalworking machinery. With the recent addition of the new "Red Line", General International & Excalibur branded products has expanded its customer base from a wide range of metalworking & woodworking businesses to include contractors and homeowners.



CONTENTS

ABOUT OUR BRANDS

PRODUCTS & ACCESSORIES

01/06 Dust Collector

07/14 Bench Grinder

15/21 Drill Press

22/25 Band Saw

26/28 Table Saw

29/30 Wood Lathe

31/32 Jointer

33/35 Stand

36/37 Router Table

38/42 Scroll Saw

43/45 CNC Machine



DUST COLLECTOR



10-030 M1
10-030DAS M1



10-030CF M1
10-030CF DAS M1

Features

- Powerful 1 HP motor features sealed bearing and shaft for quiet, long-lasting operation.
- Safety switch with key. Unit cannot be started when key is removed from the switch.
- Precision spin-balanced impeller for smooth operation and minimal noise.
- Reusable clear plastic collector bag for improved dust collection efficiency.
- Collector body mounted on 4 heavy-duty supports.
- Quick-release bag clamps with metal straps.
- Equipped with 2 micron filter bag(not included on "CF" canister filter model).
- Equipped with high efficiency 1 micron canister filter(only for "CF" canister filter model)
- Large 7" rubber wheels for exceptional stability and smooth mobility.

SMART
CONE



SMART CONE

Exclusive Smart Cone technology brings creative innovation of dust collection. Significantly improves packing efficiency of the collector bag, prevent filter clogging by improving chip separation, make your shop cleaner and keep the dust away from your lungs.

10-030CF M1/10-030CF DAS M1 | Dust Collector - 1 HP



Canister filter
#10-006S



4" x 10" polyethylene
flexible hose
#10-410



2 micron filter bag
#10-015



Clear plastic collector bag
#10-016



Bag clamp
#10-092

Optional Accessories

4" x 2 ½" reducer (#10-072)
4" x 2 ½" reducer (#10-073)
4" x 2 ½" reducer (#10-074)
Dust hood 8 ¼" x 8 ¼" x 4" (#10-076)
Floor sweeps (#10-078)
4" blast gate (#10-080)
Universal dust hood (#10-081)
4" T-fitting (#10-082)
4" Y-fitting (#10-083)
4" elbow (#10-084)

4" splice (#10-085)
4" x 2 ½" reducer (#10-086)
4" x 10" dust hood (#10-087)
4" cap (#10-088)
4" hose clamp (#10-089)
Window type collector bag (#10-125)
4" x 50" polyethylene flexible hose (#10-130)
4" x 50" grey flexible hose (#10-130G)
Remote control (#10-150R)
Accessory kit for dust collector - 1 machine hook-up (#10-100)

SPECIFICATION

ITEM NO.	10-030 M1	10-030DAS M1	10-030CF M1	10-030CF DAS M1
STYLE(TYPE)	Filter Bag	Filter Bag	Canister	Canister
INLET DIAMETER	4" (102 mm)		4" (102 mm)	
AIRFLOW CAPACITY	506 cfm		506 cfm	
SOUND RATING	80-85 dB		80-85 dB	
BLOWER WHEEL DIAMETER	10" (254 mm)		10" (254 mm)	
STATIC PRESSURE	6 ¾" of water		6 ¾" of water	
CANISTER FILTER SIZE	14 ½" x 11 ¾" (370 x 300 mm)		14 ½" x 11 ¾" (370 x 300 mm)	
OVERALL DIMENSIONS (L x W x H)	31 ½" x 18 ¾" x 47 ¾" (790 x 480 x 1210 mm)		31 ½" x 18 ¾" x 47 ¾" (790 x 480 x 1210 mm)	
MOTOR	1 HP, 110 V, 7 A		1 HP, 110 V, 7 A	
WEIGHT	55 lbs (25 kg)		62 lbs (28 kg)	
SWITCH	Safety switch with key	SMART Dual Auto Switch	Safety switch with key	SMART Dual Auto Switch



10-105 M1
10-110 M1



10-105CF M1
10-110CF M1

Features

- Heavy-duty motor design with a continuous duty rating for industrial applications.
- Equipped with totally enclosed, fan cooled, permanently lubricated motor.
- Designed for industrial applications with a continuous duty rating.
- Heavy-duty base, mounted on four swivel casters, allowing total mobility and stability.
- Safety switch with key. Unit cannot be started when key is removed from the switch.
- Precision spin-balanced impeller for smooth operation and minimal noise.
- Reusable clear plastic collector bag for improved dust collection efficiency.
- 5" heavy-duty PVC hose between body of fan and collector.
- Equipped with 2 micron filter bag. (Not included on "CF" canister filter model).
- Quick-release bag clamps with metal straps.
- Intake screen prevents larger pieces from jamming in the impeller.
- Heavy-duty collection bag made from extra thick, transparent, recyclable plastic.

SMART CONE

SMART CONE

Exclusive Smart Cone technology brings creative innovation of dust collection. Significantly improves packing efficiency of the collector bag, prevent filter clogging by improving chip separation, make your shop cleaner and keep the dust away from your lungs.

10-110 M1 / 10-110CF M1 | Dust Collector - 2HP



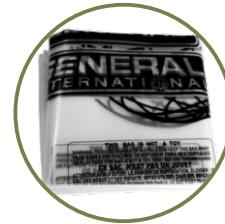
Canister filter
#10-106M



4" x 50" polyethylene
flexible hose
#10-130



2 micron filter bag
#10-115



Clear plastic collector bag
#10-120



Bag clamp
#10-093

Optional Accessories

- | | |
|---------------------------------------|--|
| 4" x 2 ½" reducer (#10-072) | 4" splice (#10-085) |
| 4" x 2 ½" reducer (#10-073) | 4" x 2 ½" reducer (#10-086) |
| 4" x 2 ½" reducer (#10-074) | 4" x 10" dust hood (#10-087) |
| Dust hood 8 ¼" x 8 ¼" x 4" (#10-076) | 4" cap (#10-088) |
| Dust hood 10 ¼" x 8 ½" x 4" (#10-076) | 4" or 5" hose clamp (#10-089/10-090) |
| Floor sweeps (#10-078) | Accessory kit for dust collector 1 machine hook-up (#10-100) |
| 4" blast gate (#10-080) | Window type collector bag (#10-125) |
| Universal dust hood (#10-081) | 4" x 50" grey flexible hose (#10-130G) |
| 4" T-fitting (#10-082) | Remote control (#10-150R) |
| 4" Y-fitting (#10-083) | Fire protection cage (#10-420) |
| 4" elbow (#10-084) | |

SPECIFICATION

ITEM NO.	10-105 M1	10-105CF M1	10-110 M1	10-110CF M1
STYLE(TYPE)	Filter Bag	Canister	Filter Bag	Canister
INLET DIAMETER	1x6" (152 mm) / 2x4" (102 mm)		1x6" (152 mm) / 2x4" (102 mm)	
AIRFLOW CAPACITY	1250 cfm		1550 cfm	
BLOWER WHEEL DIAMETER	12 ¾" (323 mm)		12 ¾" (323 mm)	
SOUND RATING	80 to 85 dB		80 to 90 dB	
BAG DIAMETER	20" (508 mm)		20" (508 mm)	
BAG CAPACITY	42 gallon (190.9 L)		42 gallon (190.9 L)	
STATIC PRESSURE (WITHOUT BAG)	9" of water		11¼" of water	
OVERALL DIMENSIONS (L x W x H)	38" x 31 ½" x 76" (970x800x1930 mm)	38" x 31 ½" x 71" (768x525x1800 mm)	39¾" x 31 ½" x 74¾" (1000x800x2000 mm)	39¾" x 31 ½" x 66¾" (1000x800x1746 mm)
MOTOR	1 ½ HP, 110/220 V, 1 Ph, 14/7 A		2 HP, 110/220 V, 1 Ph, 15 A	
WEIGHT	106 lbs (48 kg)	130 lbs (59 kg)	132 lbs (60 kg)	141 lbs (64 kg)



10-210M1



10-210CF M1

Features

- Heavy-duty motor design with a continuous duty rating for industrial applications.
- Equipped with a totally enclosed, fan cooled, permanently lubricated motor.
- Heavy-duty base, mounted on four swivel casters for total mobility and stability.
- Precision spin-balanced aluminum impeller for smooth operation, minimal noise and to reduce the risk of sparking.
- Equipped with 2 micron filter bags (not included on "CF" canister filter model).
- Quick-release bag clamps with metal straps.
- Safety switch with key, prevents unit from being started when key is removed.
- Heavy-duty collection bags made from extra thick, transparent, recyclable plastic.

Optional Accessories

- Canister filter(#10-106M)
- Bag clamp(#10-093)
- 2 micron filter bag(#10-115)
- Clear plastic collector bag(#10-120)
- Window type collector bag (#10-125)
- 4" x 50" polyethylene flexible hose (#10-130)
- 5" or 6" x 50" polyethylene flexible hose (#10-135/10-140)
- Accessory kit for dust collector 2 machine hook-up (#10-200)

SMART
CONE

SPECIFICATION

ITEM NO.	10-210M1	10-210CF M1
STYLE(TYPE)	Filter Bag	Canister
INLET DIAMETER	1x6" (152 mm) / 3x 4" (102 mm)	
AIRFLOW CAPACITY	2280 cfm	
BLOWER WHEEL DIAMETER	12" (305 mm)	
SOUND RATING	80 to 95 dB	
BAG DIAMETER	20" (508 mm)	
BAG CAPACITY	83 gallon (377 l)	
STATIC PRESSURE	15 ½" of water	
OVERALL DIMENSIONS (L x W x H)	60" x 32 ¾" x 76" (1520 x 830 x 1930 mm)	60" x 32 ¾" x 74 ¾" (1520 x 830 x 1900 mm)
MOTOR	2.5 HP, 110 V, 1 Ph, 18 A	
WEIGHT	141 lbs (64 kg)	194 lbs (88 kg)



BENCH GRINDER



15-650 M1



15-670 M1

Features

- The double grinding machines are very suitable for the professional who sets high requirements.
- High power rating and extensive range of accessories.
- High operating reliability, low-vibration and low noise level.
- Switch with no-volt release and emergency stop, thermal overload protection.
- Grinding wheels optimally accessible.
- Tilttable polycarbonate eye shields.
- Stable cast iron tool rests fixed on both sides of guards with quick adjustable.
- Optional steel-wire brush can be fitted inside the wheel guard.
- High quality, Low-temperature sintering grinding wheel could grind, sharpen and smooth with equal precision and flawless results.
- Follows strict guidelines and electrical requirements to be ETL listed for added safety.
- Machines are supplied as standard with protective covers and dust extractor connection \varnothing 50 mm.

SPECIFICATION

ITEM NO.	15-650 M1	16-670 M1
MOTOR	½HP, 120 V, 1Ph, 3.1A	½ HP, 120 V, 1Ph, 3.1A
SPEED(RPM)	2800-3400 rpm	1400-1750 rpm
WHEEL SIZE(D1xBxD2)	6" x ¾" x ½" 150 x 20 x 12.7 mm	6" x 1 ½"(L)/¾"(R) x ½" 150 x 40(L)/20(R) x 12.7 mm
ARBOR/SHAFT SIZES	½"(12.7mm)	½"(12.7mm)
TPI (THREADS PER INCH)	½"-13UNC	½"-13UNC
GRIT(LEFT/RIGHT)	36/80	100/80
WHEEL STONE(LEFT/RIGHT)	normal corundum	aluminium oxide/ normal corundum
WEIGHT	22lbs(10kg)	24lbs(11kg)

15-850 M1 & 15-870 M1 | 8" Bench Grinder



- 15-850M1 on pedestal stand with integrated dust extraction (# 15850-100)



15-850 M1



15-870 M1

SPECIFICATION

ITEM NO.	15-850 M1	16-870 M1
MOTOR	¾ HP, 120 V ,1Ph, 4.6A	¾ HP, 120 V ,1Ph, 4.6A
SPEED(RPM)	2800-3400 rpm	1400-1750 rpm
WHEEL SIZE(D1xBxD2)	8" x 1" x ½" 200 x 25 x 15.875 mm	8" x 1 ½"(L)/1"(R) x ½" 200 x 40(L)/25(R) x 15.875 mm
ARBOR/SHAFT SIZES	⅝"(15.875mm)	⅝"(15.875mm)
TPI (THREADS PER INCH)	⅝"-11UNC	⅝"-11UNC
GRIT(LEFT/RIGHT)	36/80	100/80
WHEEL STONE(LEFT/RIGHT)	normal corundum	aluminium oxide/ normal corundum
WEIGHT	35 lbs(16kg)	37lbs(17kg)



15-855 M1

Features

- Combine surface grinding and contact grinding on the belt with conventional grinding on the grinding wheel.
- High operating reliability, low-vibration running.
- Perfectly balanced to ensure minimum noise.
- Extensive range of accessories.
- Aluminum belt tension roller, easy-to-change abrasive belt.
- Switch with no-volt release and emergency stop, thermal overload protection.
- Stable cast iron tool rests fixed on both sides with quick adjustable.
- Big tiltable polycarbonate eye shields.
- Machines are supplied as standard with protective covers and dust extractor connection \varnothing 50 mm.

Optional Accessories

8" x 1" x $\frac{5}{8}$ " Grinding wheel normal corundum, Grit 80 (#158101-80)

8" x $\frac{3}{4}$ " x $\frac{5}{8}$ " Steel wire brush #15861-002

6" & 8" Pedestal Stand for Bench Grinders without dust extraction (#15850-110)

6" & 8" Pedestal Stand for Bench Grinders with integrated dust extraction (#15850-100)

39 $\frac{3}{8}$ " x 2" (1000x50mm) Belt ,Grit 80 for 15-855M1(#15876-040)



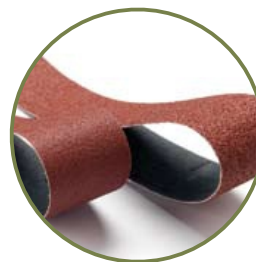
Fitted with vulcanised contact wheel with grooves



With graphite strip for belt guiding



Belt grinder side adjustable in height



Range of belts available

SPECIFICATION

ITEM NO.	15-855 M1
MOTOR	$\frac{3}{4}$ HP, 120V, 1Ph, 4.6A
SPEED(RPM)	2800-3400 rpm
BELT SIZE	39 $\frac{3}{8}$ " x 2" (1000x50mm)
GRIT	80
WHEEL SIZE (D1XBXD2)	8" x 1" x $\frac{5}{8}$ " (200 x 25 x 15.875mm)
GRIT	80
ARBOR/SHAFT SIZE	$\frac{5}{8}$ " (15.875mm)
WHEEL STONE	normal corundum
WEIGHT	44lbs (20kg)

15-680 M1 15-880 M1 | Double Polishing Machines

Features

- The double polishing machines are available in two versions, for polishing wheels with a diameter of 6" and 8".
- Both versions are equipped on both sides with a conical spindle and are fitted with polishing covers for optimum safety.
- High power rating and extensive range of accessories.
- High operating reliability, low-vibration and low noise level.
- Follows strict guidelines and electrical requirements to be ETL listed for added safety.
- Polishing wheels in 6" or 8" are suitable for fitting to the conical spindle.
- Polishing covers in 6" or 8" ensure safety during polishing.

Optional Accessories

Conical spindle on shaft-end for 15-680 M1(# 15600-001)
 Conical spindle on shaft-end for 15-880 M1(#15800-002)
 6" x ¾" x ⅝" Buffer mop linen for 15-680 M1(#15661-001)
 6" x ¾" x ⅝" Buffer mop flannel for 15-680 M1(#15671-001)
 8" x ¾" x ⅝" Buffer mop linen for 15-880 M1(#15661-002)
 8" x ¾" x ⅝" Buffer mop flannel for 15-880 M1(#15871-002)
 6" & 8" Pedestal Stand for Bench Grinders without dust extraction(#15850-110)
 6" & 8" Pedestal Stand for Bench Grinders with integrated dust extraction (#15850-100)



15-680 M1



15-880 M1

SPECIFICATION

ITEM NO.	15-680 M1	15-880 M1
MOTOR	½HP, 120 V, 1Ph, 3.1A	¾ HP, 120 V, 1Ph, 4.6A
ARBOR/SHAFT SIZES	½"(12.7mm)	⅝"(15.875mm)
SPEED	3400 rpm	3400 rpm
POLISHING WHEEL(NOT INCLUDED)	6" x ¾" x ⅝" (150x20x10mm)	8" x ¾" x ⅝" (200x20x10mm)
WEIGHT	24 lbs(11kg)	33lbs(15kg)



Polishing Wheel
(not Included)

Compatible with all General International bench grinders.



50-026

Bench grinder stand

- Sturdy 3-way footprint provides stable work position.
- Slotted steel plate 12 $\frac{3}{8}$ " X 10 $\frac{1}{4}$ " for universal mounting.
- Adjustable water tray holds water for cooling hot work pieces.
- Compatible with all General International bench grinders.



15850-110

6" & 8" Pedestal stand for bench grinders without dust extraction



15850-100

6" & 8" Pedestal stand for bench grinders with dust extraction

- Easy to-change heat resistant filter in collector tray.



Back Side

SPECIFICATION

ITEM NO.	50-026	15850-110	15850-100
HEIGHT	32"(812.8 mm)	33 $\frac{1}{2}$ "(850 mm)	33 $\frac{1}{2}$ "(850 mm)
BASE TYPE	3 feet	15 $\frac{1}{8}$ "x13"(390x330mm)	15 $\frac{1}{8}$ "x13"(390x330mm)
WEIGHT	25 lbs	44 lbs(20 kg)	55 lbs(25 kg)
MAXIMUM LOAD CAPACITY	110 lbs	120 lbs	120 lbs

Bench Grinder Accessories

Description	Item No	Picture	Specification
Grinding wheel Normal corundum	156101-36		Φ6" x ¾" x ½" (150x20x12.7mm),Grit 36
	156101-80		Φ6" x ¾" x ½"(150x20x12.7mm),Grit 80
	158101-36		Φ8" x 1" x ⅝"(200x25x15.875mm),Grit 36
	158101-80		Φ8" x 1" x ⅝" (200x25x15.875mm),Grit 80
Grinding wheel Sillicium carbide Grit 120 for hard metal	15620-120		Φ6" x ¾" x ½"(150x20x12.7mm), Grit 120
	15820-120		Φ8" x 1" x ⅝"(200x25x15.875mm), Grit 120
Grinding wheel Aluminium oxide	156301-60		Φ6" x ¾" x ½" (150x20x12.7mm),Grit 36
	156301-100		Φ6" x ¾" x ½"(150x20x12.7mm),Grit 80
	158301-060		Φ8" x 1" x ⅝"(200x25x15.875mm),Grit 36
	158301-100		Φ8" x 1" x ⅝" (200x25x15.875mm),Grit 80
Cup grinding wheel Aluminium oxide	15640-060		Φ6" x 1 ½" x ½" (150x40x12.7mm),Grit 60
	15640-100		Φ6" x 1 ½" x ½"(150x40x12.7mm),Grit 100
	15650-100		Φ8" x 1 ½" x ⅝"(200x40x15.875mm),Grit 60
	15840-060		Φ8" x 1 ½" x ⅝"(200x40x15.875mm), Grit 100
Steel wire brush	15651-001		Φ6" x 0.71" x ½" (150x18x12.7mm)
	15861-002		Φ8" x 0.71" x ⅝" (200x18x15.875mm)

Buffer mop linen	15661-001		Φ6" x 0.71" x 0.59" (150x18x15mm)
	15861-002		Φ8" x 0.71" x 0.59" (200x18x15mm)
Buffer mop flannel	15671-001		Φ6" x 0.71" x 0.59" (150x18x15mm)
	15871-002		Φ8" x 0.71" x 0.59" (200x18x15mm)
Conical spindle in combination with polishing cover	15600-001		Φ6" x 0.71" x 0.59" (150x18x15mm)
	15800-002		Φ8" x 0.71" x 0.59" (200*18*15mm)
Belt	15876-040		39⅞" x 2" (1000x50mm), Grit 40
6" & 8" Pedestal stand for bench grinders without dust extraction	15850-110		Height 33 ½"(850mm) Base 15 ⅝"x13"(390x330mm) Without Dust Extraction system
6" & 8" Pedestal stand for bench grinders with dust extraction	15850-100		Height 33 ½"(850mm) Base 15 ⅝"x13"(390x330mm) With Dust Extraction system



DRILL PRESS



LED



SMART
L E D

SMART
LASER POSITIONING



75-010 M1

Features

- Forced opening line interrupter switch, requires machine restart in case of power failure or circuit interruption.
- Adjustable spindle tension return spring.
- Built-in laser pointer, digital spindle speed display.
- Sturdy design with cast-iron head, base, and table.
- Simple hand lever controlled mechanical variable speed from 500 to 3000 rpm (280 to 2100 rpm for 75-060 M1).
- Industrial-quality, 120 V motor.
- Equipped with easy to adjustable depth stop for complete control of both down stroke depth and up stroke travel.
- 5/8" chuck with key & convenient onboard chuck key holder.
- Easy to use see-through flip-up chuck guard included.
- Crank-operated rack and pinion table height adjustment.
- Smart LED light for better working environment.

SPECIFICATION

ITEM NO.	75-010 M1
SWING	12" (305 mm)
DRILLING CAPACITY	5/8" (16 mm)
CHUCK SIZE	5/8" (16 mm)
SPINDLE TRAVEL	3 1/8" (80 mm)
SPINDLE DISTANCE TO TABLE	15" (380 mm)
SPINDLE DISTANCE TO BASE	21 1/8" (556 mm)
TABLE SIZE	9 1/2" x 9 1/2" (240 x 240 mm)
COLUMN DIAMETER	2 1/2" (65 mm)
SPINDLE SPEEDS	(variable) 500 to 3000 rpm
SPINDLE TAPER	MT2
OVERALL HEIGHT	34 1/8" (868 mm)
BASE SIZE	15" x 9 5/8" (380 x 245 mm)
MOTOR	1/2 HP, 120 V, 3.2 A
WEIGHT	75 lbs (34 kg)

75-060 M1 | 15" Variable Speed Drill Press



Optional Accessories

22 piece drill set 1/16" to 3/8" (#70-020)

9" auger drill bit set (#70-105)

Chuck guard (#70-115A)

Self centring pen drilling vice (#70-120)

Drill press tool tray (#70-125)

Chuck guard (#70-155)

SPECIFICATION

ITEM NO.	75-060 M1
SWING	15" (390 mm)
DRILLING CAPACITY	3/4" (20 mm)
CHUCK SIZE	5/8" (16 mm)
SPINDLE TRAVEL	3 1/8" (80 mm)
SPINDLE DISTANCE TO TABLE	17 1/8" (435 mm)
SPINDLE DISTANCE TO BASE	26 3/4" (680 mm)
TABLE SIZE (DIAMETER)	12 3/8" (315 mm)
COLUMN DIAMETER	2 3/4" (70 mm)
SPINDLE SPEEDS	(variable) 280 to 2100 rpm
SPINDLE TAPER	MT2
OVERALL HEIGHT	42" (1065 mm)
BASE SIZE	17" x 10 1/2" (430 x 265 mm)
MOTOR	1/2 HP, 120 V, 5 A
WEIGHT	128.7 lbs (58.5 kg)



75-060 M1



SMART
L E D

SMART
LASER POSITIONING



SMART
L E D

SMART
LASER POSITIONING

75-155 M1

Features

- Adjustable spindle tension return spring.
- Built-in laser pointer.
- Sturdy design with cast-iron head, base, and table.
- High-quality bearings for smooth, vibration-free operation.
- Simple hand lever controlled mechanical variable speed from 280 to 2100 rpm.
- Digital spindle speed display.
- Industrial-quality 120 V motor.
- ½" Chuck with key.
- Easy to use see-through flip-up chuck guard included.
- Crank-operated rack and pinion table height adjustment.
- Smart LED light for better working environment.

SPECIFICATION

ITEM NO.	75-155 M1
SWING	15" (390 mm)
DRILLING CAPACITY	¾" (20 mm)
CHUCK SIZE	½" (16 mm)
SPINDLE TRAVEL	3 ½" (80 mm)
SPINDLE DISTANCE TO TABLE	29 ¾" (745 mm)
SPINDLE DISTANCE TO BASE	48 ½" (1230 mm)
TABLE SIZE (DIAMETER)	12 ¾" (315 mm)
COLUMN DIAMETER	2 ¾" (70 mm)
SPINDLE SPEEDS	(variable) 280 to 2100 rpm
SPINDLE TAPER	MT2
OVERALL HEIGHT	63 ¾" (1610 mm)
BASE SIZE	17" x 10 ½" (430 x 265 mm)
MOTOR	½ HP, 120 V, 5 A
WEIGHT	136 lbs (62 kg)

75-165 M1 | 17" Variable Speed Drill Press



Optional Accessories

22 piece drill set 1/16" to 3/8" (#70-020)

9" auger drill bit set (#70-105)

Chuck guard (#70-115A)

Self centring pen drilling vice (#70-120)

Drill press tool tray (#70-125)

Chuck guard (#70-155)

SPECIFICATION

ITEM NO.	75-165 M1
SWING	17" (430 mm)
DRILLING CAPACITY	1 1/8" (28 mm)
CHUCK SIZE	3/8" (16 mm)
SPINDLE TRAVEL	3 1/8" (80 mm)
SPINDLE DISTANCE TO TABLE	29" (735 mm)
SPINDLE DISTANCE TO BASE	48 3/8" (1235 mm)
TABLE SIZE	13 3/4" x 13 3/4" (355 x 355 mm)
COLUMN DIAMETER	3 1/8" (80 mm)
SPINDLE SPEEDS	(variable) 280 to 2100 rpm
SPINDLE TAPER	MT3
OVERALL HEIGHT	64 3/8" (1635 mm)
BASE SIZE	20 3/4" x 12" (515 x 303 mm)
MOTOR	1 HP, 120 V, 6.5 A
WEIGHT	161 lbs (73 kg)



75-165 M1



SMART
L E D

SMART
LASER POSITIONING



SMART
L E D

SMART
LASER POSITIONING



75-710 M1

Features

- Electronic inverter variable control adjusts spindle speed from 120 to 3200 rpm.
- Front-mounted digital spindle speed display.
- Adjustable spindle tension return spring.
- Built-in laser pointer.
- Sturdy design with cast-iron head, base, and table.
- High-quality bearings for smooth, vibration-free operation.
- 1 HP industrial-quality, 120 V motor.
- ½" chuck with key.
- Easy to use see-through flip-up chuck guard included.
- Crank-operated rack and pinion table height adjustment.
- Smart LED light for better working environment.

SPECIFICATION

ITEM NO.	75-710 M1
SWING	17" (430 mm)
DRILLING CAPACITY	1 ½" (28 mm)
CHUCK SIZE	½" (16 mm)
SPINDLE TRAVEL	3 ½" (80 mm)
SPINDLE DISTANCE TO TABLE	29" (735 mm)
SPINDLE DISTANCE TO BASE	48 ¾" (1235 mm)
TABLE SIZE	13 ¼" x 13 ¼" (335 x 335 mm)
COLUMN DIAMETER	3 ½" (80 mm)
SPINDLE SPEEDS (VARIABLE)	120 to 480 rpm/280 to 1200 rpm/740 to 3200 rpm
SPINDLE TAPER	MT3
OVERALL HEIGHT	64 3/8" (1635 mm)
BASE SIZE	20 ¼" x 12" (515 x 303 mm)
MOTOR	1 HP, 120 V, 1 Ph
WEIGHT	161 lbs (73 kg)

75-510 M1 | 20" Variable Speed Drill Press

Features

- Adjustable spindle tension return spring.
- Built-in laser pointer, digital spindle speed display.
- Sturdy design with cast-iron head, base, and table.
- Simple hand lever controlled mechanical variable speed from 280 to 2100 rpm.
- Industrial-quality 120 V motor, 3/4" chuck with key.
- Easy to use see-through flip-up chuck guard included.
- Smart LED light for better working environment.

Optional Accessories

22 piece drill set 1/16" to 3/8" (#70-020).

9" auger drill bit set (#70-105).

Chuck guard (#70-115A).

Self-centring pen drilling vice (#70-120).

Drill press tool tray (#70-125).

Chuck guard (#70-155).

SPECIFICATION

ITEM NO.	75-510 M1
SWING	20" (515 mm)
DRILLING CAPACITY	1 1/4" (32 mm)
CHUCK SIZE	3/4" (20 mm)
SPINDLE TRAVEL	4 3/4" (120 mm)
SPINDLE DISTANCE TO TABLE	27 3/4" (705 mm)
SPINDLE DISTANCE TO BASE	46 7/8" (1190 mm)
TABLE SIZE	18 3/4" x 16 3/4" (475 x 425 mm)
COLUMN DIAMETER	3 5/8" (92 mm)
SPINDLE SPEEDS	(variable) 280 to 2100 rpm
SPINDLE TAPER	MT3
OVERALL HEIGHT	67" (1700 mm)
BASE SIZE	23 7/8" x 15 3/4" (600 x 400 mm)
MOTOR	1 HP, 120 V, 10 A
WEIGHT	284 lbs (129 kg)



75-510 M1



SMART
L E D

SMART
LASER POSITIONING



BAND SAW

90-030 M1 | 10" Wood Cutting Bandsaw

Features

- Sturdy welded steel frame & precision-balanced wheels with replaceable tires.
- Easy-to-assemble open-based steel stand.
- Precision blade guide bearings included.
- Miter gauge with auxiliary aluminum crosscut fence included.
- Quick-release blade tension for fast blade changes.
- Hinged doors and easily accessible blade tension knob for fast blade changes and adjustments.
- Large stable cast-iron table with slide-out steel extension wing.
- Includes goose-neck style worklight.
- Smooth running durable ½ HP motor.
- Convenient blade tracking window.
- Safety lock-out switch with removable key to prevent unauthorized use.
- Multi-size dust port fits 4", 3", or 2" hose.

SMART
L E D

SPECIFICATION

ITEM NO.	90-030 M1
WHEEL SIZE	10" (254 mm)
WHEEL SPEEDS	1134 rpm
BLADE SPEEDS	2920 lin. fpm
BLADE WIDTH	⅝" to ½" (3 to 12 mm)
BLADE LENGTH	67 ½" (1712 mm)
TABLE SIZE	13 ⅝" x 13 ⅝" (340 x 335 mm)
TABLE TILT	0° to 45° (right)
TABLE HEIGHT	42" (1067 mm)
MAXIMUM WIDTH OF CUT	9 ⅝" (245 mm)
MAXIMUM DEPTH OF CUT	4 1/16" (103 mm)
DUST OUTLET	2", 3" & 4" (51, 76 & 102 mm)
BASE DIMENSIONS (L x W)	15 ½" x 12 ½" (395 x 310 mm)
MOTOR	½ HP, 120 V, 3.4 A
WEIGHT	88 lbs (40 kg)



90-030 M1



90-040 M1

SMART
L E D

Features

- Sturdy welded steel frame & precision balanced wheels with replaceable tires.
- Easy-to-assemble open-base steel stand.
- Precision easy-adjust European style blade guide bearings included.
- Two cutting speeds for excellent results in either hard or soft woods.
- Miter gauge with aluminum crosscut fence included.
- Deluxe dual-position rip fence system.
- Hinged doors and easily accessible blade tension knob, for fast blade changes and adjustments.
- Extra-large 21 ½" x 15 ¾" cast-iron table.
- Smooth running heavy-duty ¾ HP motor.
- Safety lock-out switch with removable key to prevent unauthorized use.
- Multi-size dust port fits 4", 3", or 2" hose.

SPECIFICATION

ITEM NO.	90-040 M1
WHEEL SIZE	12" (315 mm)
WHEEL SPEEDS (2)	445 & 970 rpm
BLADE SPEEDS (2)	1444 & 3150 lin. Fpm
BLADE WIDTH	½" to ¾" (3 to 19 mm)
BLADE LENGTH	88" (2240 mm)
TABLE SIZE	21 ½" x 15 ¾" (548 x 400 mm)
TABLE TILT	0° to 45° (right)
TABLE HEIGHT	37 ¾" (950 mm)
MAXIMUM WIDTH OF CUT	12" (305 mm)
MAXIMUM DEPTH OF CUT	6 ½" (165 mm)
DUST OUTLET	2", 3" & 4" (51, 76 & 102 mm)
BASE DIMENSIONS (L x W)	18 ¾" x 15 ¾" (465 x 400 mm)
MOTOR	¾ HP, 120 V, 6.4 A
WEIGHT	165 lbs (75 kg)

90-120 M1 | 14" Wood Cutting Bandsaw

Features

- Sturdy welded steel frame & precision balanced wheels with replaceable tires.
- Sturdy closed base steel stand.
- Deluxe blade guide bearings included.
- Precision metal miter gauge.
- Two cutting speeds for excellent results in either hard or soft woods.
- Deluxe dual-position rip fence system.
- Hinged doors and easily accessible blade tension knob, for fast blade changes and adjustments.
- Extra-large 21 ½" x 15 ¾" cast-iron table.
- Smooth running heavy-duty 1 HP motor.
- Safety lock-out switch with removable key to prevent unauthorized use.

SMART
L E D



90-120 M1

SPECIFICATION

ITEM NO.	90-120 M1
WHEEL SIZE	14" (350 mm)
WHEEL SPEEDS (2)	436 & 909 rpm
BLADE SPEEDS (2)	1575 & 3280 lin. fpm
BLADE WIDTH	½" to ¾" (3 to 19 mm)
BLADE LENGTH	100 ¾" (2560 mm)
TABLE SIZE	21 ½" x 15 ¾" (548 x 400 mm)
TABLE TILT	0° to 45° (right)
TABLE HEIGHT	39 ¾" (950 mm)
MAXIMUM WIDTH OF CUT	13 ¾" (340 mm)
MAXIMUM DEPTH OF CUT	9" (230 mm)
DUST OUTLET	4" (102 mm)
BASE DIMENSIONS (L X W)	22 ¾" x 17 ¾" (580 x 440 mm)
MOTOR	1 HP, 120 V, 9.5 A
WEIGHT	194 lbs (88 kg)



TABLE SAW

350 M1 | 10" 3 HP Deluxe Cabinet Saw (Right Tilt)

Features

- Powder coated, scratch resistant, high quality reinforced steel cabinet.
- High-precision General "T" Fence System with 50" long guide rails.
- Optional melamine extension table and adjustable support legs .
- 2 miter gauge T-slots and deluxe cast-iron miter gauge.
- Magnetic 2-step safety switch to prevent unwanted or unintentional start-up is equipped with an extra-large easy access stop panel and a lock-out key to prevent unauthorized use of the saw.
- Arbor mounted on heavy-duty, permanently lubricated, sealed ball-bearings.

SPECIFICATION

ITEM NO.	350 M1(Right Tilt)
BLADE DIAMETER	10" (254 mm)
ARBOR DIAMETER	5/8" (16 mm)
ARBOR TILTING RANGE	0° to 45°
ARBOR SPEED	4000 rpm
MAXIMUM DEPTH OF CUT AT 90°	3 1/8" (79 mm)
MAXIMUM DEPTH OF CUT AT 45°	2 1/8" (54 mm)
MAXIMUM RIP TO LEFT OF BLADE	12" (305 mm)
MAXIMUM RIP TO RIGHT OF BLADE	50" (1270 mm)
MAXIMUM DADO WIDTH	13/16" (21 mm)
DISTANCE AHEAD OF BLADE	12 3/4" (324 mm)
TABLE SIZE	28" x 36" (711 x 914 mm)
TABLE HEIGHT	34" (864 mm)
SIZE OF T-SLOT	3/8" x 3/4" (10 x 19 mm)
MOTOR	3HP 230V 1Ph
WEIGHT	539 lbs (245 kg)



350M1



Quick release combination riving style splitter and blade guard with anti-kickback pawls .



650M1



Cast Iron Handwheel



Duluxe Rip Fence
#SLF35T52



Extension Table
#50-350 ET

Features

- Totally enclosed, fan cooled industrial motor.
- Large, heavy-duty cast-iron hand wheels for effortless blade adjustments.
- High-precision General "T" Fence System with 50" long guide rails.
- Optional melamine extension table and adjustable support legs .
- 2 miter gauge T-slots and deluxe cast-iron miter gauge.
- Matching dual V-belt drive, on balanced cast-iron pulleys for smooth vibration-free running.

SPECIFICATION

ITEM NO.	650 M1(Left Tilt)
BLADE DIAMETER	10" (254 mm)
ARBOR DIAMETER	5/8" (16 mm)
ARBOR TILTING RANGE	0° to 45°
ARBOR SPEED	4000 rpm
MAXIMUM DEPTH OF CUT AT 90°	3 1/8" (79 mm)
MAXIMUM DEPTH OF CUT AT 45°	2 1/8" (54 mm)
MAXIMUM RIP TO LEFT OF BLADE	12" (305 mm)
MAXIMUM RIP TO RIGHT OF BLADE	50" (1270 mm)
MAXIMUM DADO WIDTH	13/16" (21 mm)
DISTANCE AHEAD OF BLADE	12 3/4" (324 mm)
TABLE SIZE	28" x 36" (711 x 914 mm)
TABLE HEIGHT	34" (864 mm)
SIZE OF T-SLOT	3/8" x 3/4" (10 x 19 mm)
MOTOR	3HP 230V 1Ph
WEIGHT	539 lbs (245 kg)



WOOD LATHE



160 M1



Mechanical variable speed

Optional Accessories

- Spur center(#1632SA)
- Live center(#2651-1)
- Knockout bar(#2644)
- 4" (#165)&12" (#166)tool rest
- 3" diameter faceplate(#1637)
- Tool rest carriage(#264SA)

Features

- Mechanical variable speed from 500-3000rpm.
- High quality ribbed cast-iron head stock, tail stock, and bed.
- Precision-machined bed guide ways allow the tail stock and tool rest to slide smoothly.
- Precision-machined, high quality steel spindle, mounted on sealed, permanently lubricated bearings.
- Equipped with plunger-type pin indexing mechanism for reeding and fluting.
- Spindle nose is threaded $\frac{3}{8}$ " at both ends and bored for a "Morse No.2" taper.
- Removable head stock cover for access to the spindle and indexing mechanism.
- Powerful North American designed, totally enclosed, fan cooled industrial motor.
- Push-button switch on single-phase units.
- Increase or decrease speed without stopping the machine by using the front mounted control lever.

SPECIFICATION

ITEM NO.	160 M1
SWING-OVER BED CAPACITY	18" (457 mm)
SWING-OVER GAP CAPACITY	21" (533 mm)
MAXIMUM DISTANCE BETWEEN CENTERS	38" (965 mm)
FLOOR TO SPINDLE CENTER	41" (1041 mm)
NOSE-INBOARD & NOSE-OUTBOARD (RIGHT-HAND THREADS OR LEFT-HAND THREADS)	1" (25.4 mm) - 8 tpi
SPINDLE BORE	$\frac{3}{8}$ " (16 mm)
HEADSTOCK & TAILSTOCK TAPER	MT 2
TAILSTOCK SPINDLE TRAVEL	2" (50.8 mm)
SPINDLE SPEEDS	(variable) 500 to 3000 rpm
MOTOR	1 HP, 120 V, 1 Ph, 12.8 A
WEIGHT	282 lbs(128kg)



JOINTER



480 M1

Features

- Three high speed steel knives provide a superior finish.
- Heavy-duty cast iron infeed and outfeed tables with precision machined finish.
- Built-in rabbeting ledge adds versatility.
- Two-way tilting fence with positive stops at 45° and 90° to handle bevel operations Large.
- Heavy-duty table adjustment handwheel has a locking knob for quick, easy and secure table height corrections.

SPECIFICATION

ITEM NO.	480 M1
CUTTING DEPTH	½" (12.7mm)
CUTTING WIDTH	8" (203mm)
FENCE TILTING LEFT TO RIGHT	-45° to 45°
FENCE	4"x38" (101.6x860mm)
LENGTH OF TABLE	74" (1620mm)
HEIGHT OF TABLE	33" (830mm)
CUTTING CIRCLE	3¾" (82.5mm)
CUTTING-HEAD SPEED	4500 rpm/ 13500 cuts/Min.
WIDTH	24½" (622mm)
LENGTH	63¾" (1620mm)
HEIGHT	39¾" (997mm)
MOTOR	1 ½ HP, 115V, 1 Ph
SPEED	1760rpm
WEIGHT	480lbs (218kg)



STAND



MS3103



Safety Switch



Quick-release
mounting brackets

Features

- Universal quick-release mounting brackets for easy mounting and removal of most 10" and 12" miter saw and other bench top tools.
- Support arms extend up to 80" to accommodate a range of materials.
- Two 9½" smooth steel rollers adjust up and down to help feed long work pieces.
- Two-outlet power strip with safety switch.
- 8" wheels for convenient transport around the job site.
- Quick Release Levers :to quickly attach or remove the mounted bench-top tool.
- Durable Steel Construction: supports up to 330lbs.
- Bracket Handles: to easily lift the bracket and mounted tool from the stand.
- Stop block: to ensure consistent cuts.

SPECIFICATION

ITEM NO.	MS3103
HEIGHT	32 7/8" (835 mm)
WIDTH	46" to 80" (1168 mm to 2032 mm)
MAXIMUM LOAD CAPACITY	330 lbs (150 kg)
SWITCH RATING INPUT VOLTAGE	125V /AC
SWITCH RATING INPUT AMPERE	15 A
WHEEL DIAMETER	8" (200mm)
WEIGHT	44 lbs (20 kg)

50-025/50-027 | Universal Mobile Base/Roller Support Stand



50-025

Features

- 2 heavy-duty 3" wheels.
- 2 heavy-duty 2 ½" casters.
- 2 rubber leveling feet.
- Adjustment in 1" increments.

SPECIFICATION

ITEM NO.	50-025
MAXIMUM WIDTH OF CUT	13 ¾" (340 mm)
MINIMUM SQUARE SIZE	11" x 11" (279 x 279 mm)
MAXIMUM SQUARE SIZE	35 ¼" x 35 ¼" (894 x 894 mm)
MINIMUM RECTANGULAR SIZE	17" x 11" (434 x 279 mm)
MAXIMUM RECTANGULAR SIZE	51" x 19" (1295 x 483 mm)
MAXIMUM LOAD CAPACITY	500 lbs (227 kg)
WEIGHT	12 lbs(5kg)



50-027

Features

- Adjustable height 28" to 43" levels workpiece with bench top or stationary power tools.
- Portable, folds to a compact size for easy transport and storage.
- 11 ½" smooth steel roller helps feed long workpieces.
- Heavy duty steel construction.
- Height-locking lever.
- Plastic footpads for additional stability.

SPECIFICATION

ITEM NO.	50-027
ADJUSTABLE HEIGHT	28 " to 43 "(711mm to 1092mm)
MAXIMUM LOAD CAPACITY	130 lbs(60 kg)
WEIGHT	9.68 lbs(4.4 kg)



ROUTER TABLE

40-200C | Deluxe Router Table Kit

Features

- Heavy-duty massive router lift with 9 1/4" x 11 3/4" and aluminum top plate.
- Stable four post/lift screw design & chain drive lifting system controlling all four corners simultaneously.
- Smooth above-the-table adjustment mechanism for fast tool changes & precision bit setting.
- Fence has 2 1/4" dust collection outlet and adjustable scales.
- Some router models may require reducer collars / adaptors.
- Includes 2 1/4" dust hose and two hose clamps.
- Fits all fixed base router motors.
- Under table steel dust enclosure with access door, adjustable air vent, power cord grommet and 4" dust port with 2 1/4" branch inlet to the fence.
- Stand made of tubular steel, includes mobility kit, adjustable leveling feet and easy access on/off safety switch with removable lock-out key.



Router lift
#40-125



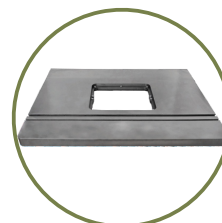
Dust Collection Kit
#40-130



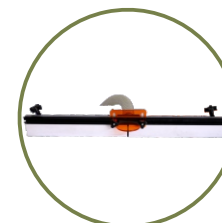
40-200C

SPECIFICATION

ITEM NO.	40-200C
OVERALL DIMENSIONS	35 1/2" x 24" x 41" (902 x 609 x 1041 mm)
TABLE SIZE (L x W x H)	24" x 32" x 1 1/4" (609 x 812 x 32 mm)
TABLE HEIGHT	36 1/2" (927 mm)
FENCE SIZE (EACH)	3" x 17 3/4" x 3/4" (76 x 451 x 19 mm)
MAXIMUM FENCE TRAVEL	9" (229 mm)
DUST OUTLET	4" (102 mm)
DISTANCE BETWEEN T-SLOT & SPINDLE CENTER	3/4": 5 5/8" (143 mm) / 5/8": 7 1/4" (183 mm)
DISTANCE FROM SPINDLE CENTER TO FRONT EDGE OF TABLE	12" (305 mm)
T-SLOT DIMENSIONS	3/4" x 3/8" (19 x 10 mm) / 5/8" x 1/4" (10 x 7 mm)
ROUTER INSERT PLATE	9 1/4" x 11 3/4" (235 x 298 mm)
TABLE OPENING SIZES (DIAMETER)	(Plate) 3 3/4" (95 mm) / (Insert ring) 1 1/2" (38 mm)
WEIGHT	185 lbs (84 kg)



Cast iron Table
#40-075



Router Fence
#40-080



Stand
#40-085



SCROLL SAW

Features

- Upper and lower blade guard assembly helps prevent accidental hand contact with the blade.
- Switch protection device to prevent unintentional start-up.
- Dust collector table kit for direct dust extraction hook-up.
- Head tilts 38° left and 45° right, tilting the blade, not the table; keeping the workpiece level for better control & more accurate cuts.
- 21" throat capacity, 2" cutting thickness capacity.
- Large 13 ½" x 23 ½" table surface.
- Quick blade changes with finger-operated blade clamps: no tools required.
- Easy-access speed and tension controls.
- Onboard dust blower, organized blade storage on base.

Kit consists of 1 each

- Scroll Saw (#EX-21)
- 6 ½ ft. (2 m) 16 gauge power cord.
- Adjustable metal stand (#EX-21BS)
Four positions from 24 ½" to 31 ½" high (622 to 800mm high).
- Foot switch (#EX-01)
Enjoy hands-free on/off control with scroll saws.
Features constant "off" mode, press and hold down the switch to turn "on", simply lift foot from switch to turn "off".

SPECIFICATION

ITEM NO.	EX-21 K
LENGTH	32" (812 mm)
WIDTH	15" (380 mm)
HEIGHT	15" (380 mm)
HEAD TILT RANGE	38° (left) to 45° (right)
THROAT CAPACITY	21" (535 mm)
MAXIMUM CUTTING DEPTH	2" (51 mm)
SPEED	(variable) 400 to 1550 strokes/min
TABLE SURFACE	13½" x 23½" (345 x 597 mm)
MOTOR	0.2 HP, 120 V, 1.3 A



EX-21K



Direct dust extraction hook-up



Upper and lower blade guards



Low vibration



EX-16K



Direct dust extraction hook-up



Upper and lower blade guards



Low vibration

Features

- Upper and lower blade guard assembly helps prevent accidental hand contact with the blade.
- Switch protection device to prevent unintentional start-up.
- Dust collector table kit for direct dust extraction hook-up.
- Head tilts 30° left and 45° right, tilting the blade, not the table;
- Keeping the workpiece level for better control & more accurate cuts.
- 16" throat capacity, 2" cutting thickness capacity.
- Large 12" x 18 1/2" table surface.
- Quick blade changes with finger-operated blade clamps: no tools required.
- Easy-access speed and tension controls, onboard dust blower.

Kit consists of 1 each

- Scroll Saw(#EX-16)
- 6 1/2 ft. (2 m) 16 gauge power cord.
- Adjustable metal stand(#EX-21BS)
Four positions from 24 1/2" to 31-1/2" high (622 to 800 mm high)
- Foot switch(#EX-01)
Enjoy hands-free on/off control with scroll saws.
Features constant "off" mode, press and hold down the switch to turn "on", simply lift foot from switch to turn "off".

SPECIFICATION

ITEM NO.	EX-16K
LENGTH	27" (686 mm)
WIDTH	15" (380 mm)
HEIGHT	17" (432 mm)
HEAD TILT RANGE	30° (left) to 45° (right)
THROAT CAPACITY	16" (406 mm)
MAXIMUM CUTTING DEPTH	2" (51 mm)
SPEED	(variable) 400 to 1400 strokes/min
TABLE SURFACE	12" x 18-1/2" (305 x 470 mm)
MOTOR	0.2 HP, 120 V, 1.3 A

Features

- Upper and lower blade guard assembly helps prevent accidental hand contact with the blade.
- Switch protection device to prevent unintentional start-up.
- Dust collector table kit for direct dust extraction hook-up.
- Head tilts 38° left and 45° right, tilting the blade, not the table; keeping the workpiece level for better control & more accurate cuts.
- 21" throat capacity, 2" cutting thickness capacity.
- Large 13 ½" x 23 ½" table surface.
- Quick blade changes with finger-operated blade clamps: no tools required.
- Easy-access speed and tension controls.
- Onboard dust blower, organized blade storage on base.

Includes

- Scroll Saw(#EX-21)
- Foot switch (#EX-01)
- 6 ½ ft. (2 m) 16 gauge power cord.

Optional Accessories

Adjustable metal stand(#EX-21 BS).

SPECIFICATION

ITEM NO.	EX-21
LENGTH	32" (812 mm)
WIDTH	15" (380 mm)
HEIGHT	15" (380 mm)
HEAD TILT RANGE	38° (left) to 45° (right)
THROAT CAPACITY	21" (535 mm)
MAXIMUM CUTTING DEPTH	2" (51 mm)
SPEED	(variable) 400 to 1550 strokes/min
TABLE SURFACE	13-1/2" x 23-1/2" (345 x 597 mm)
MOTOR	0.2 HP, 120 V, 1.3 A
WEIGHT	65 lbs(29.5kg)



EX-21



Direct dust extraction hook-up



Upper and lower blade guards



Low vibration



EX-16



Direct dust extraction hook-up



Upper and lower blade guards



Low vibration

Features

- Upper and lower blade guard assembly helps prevent accidental hand contact with the blade.
- Switch protection device to prevent unintentional start-up.
- Dust collector table kit for direct dust extraction hook-up.
- Head tilts 30° left and 45° right, tilting the blade, not the table;
- Keeping the workpiece level for better control & more accurate cuts.
- 16" throat capacity, 2" cutting thickness capacity.
- Large 12" x 18 ½" table surface.
- Quick blade changes with finger-operated blade clamps: no tools required.
- Easy-access speed and tension controls, onboard dust blower.

Optional Accessories

Foot switch(#EX-01).

Adjustable metal stand(#EX-21 BS).

SPECIFICATION

ITEM NO.	EX-16
LENGTH	27" (686 mm)
WIDTH	15" (380 mm)
HEIGHT	17" (432 mm)
HEAD TILT RANGE	30° (left) to 45° (right)
THROAT CAPACITY	16" (406 mm)
MAXIMUM CUTTING DEPTH	2" (51 mm)
SPEED	(variable) 400 to 1400 strokes/min
TABLE SURFACE	12" x 18 ½" (305 x 470 mm)
MOTOR	0.2 HP, 120 V, 1.3 A
WEIGHT	54 lbs(24.5 kg)



CNC MACHINE



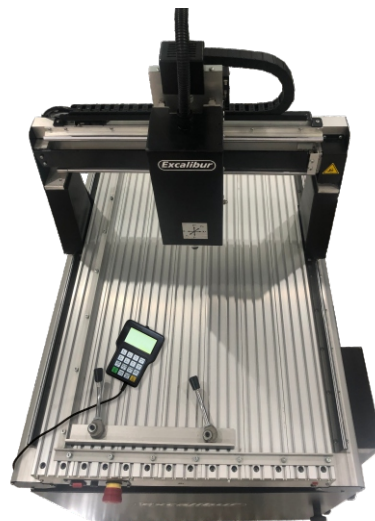
EC-617 M1 HC



The RichAuto A1X
Handheld controller
#EC-617HC



i-Carver



Features

- New! Renowned Excalibur By General International design expertise now available in CNC technology.
- Simply transfer your file to the handheld controller via USB storage device. The handheld controller is a powerful, lightweight and easy to use controller with over a decade of proven results in demanding applications. No external operating PC required!
- Smooth and accurate ball screw transmission on all axi.
- Powerful 550W variable frequency motor for excellent performance and low maintenance. Variable cutting up to 118 inches per minute.
- Spindle speeds up to 24,000 rpm with automatic spindle ON/OFF control.
- Positional accuracy up to +/-0.004 inches.
- Aluminum table with integrated hold down clamps.

SPECIFICATION

ITEM NO.	EC-617 M1 HC
X AXIS CUTTING CAPACITY	16" (406 mm)
Y AXIS CUTTING CAPACITY	24" (610 mm)
Z AXIS CUTTING CAPACITY	4" (102 mm)
POSITIONAL ACCURACY	±0.004" (± 102 mm)
OVERALL DIMENSIONS MACHINE ONLY(W x L x H)	27-¾"x38½"x27½"(704x980x700 mm)
WITH STAND(W x L x H)	40½"x31½"x55½"(1020x800x1400 mm)
WITH STAND & ENCLOSURE(W x L x H)	32¼"x43¼"x56¼"(820x1100x1430 mm)
SPINDLE SPEED	0 - 24,000 tr/min
MOTOR	550 watts/variable frequency motor
TABLE MATERIAL	Aluminium
TABLE SIZE	38"x22"
PROGRAMMING SOFTWARE INCLUDED	The Rich Auto A1X Handheld controller
CUTTING SPEEDS	Variable - Up to 118" per minute
INPUT POWER REQUIREMENTS	110/115V - 9A
COLLETS (HOW MANY & SIZES INCLUDED)	1x¼" (6 mm)
WEIGHT	308 lbs (140 kg)

EC-617 M1 | 16" x 24" CNC Machine

Excalibur

Features

- New! Renowned Excalibur By General International design expertise now available in CNC technology.
- Control Panel Steel enclosure Included.
- Masso HTG5A15 upgradable Controller includes Masso software. No external operating PC required!(Requires monitor and USB Keyboard).
- Smooth and accurate ball screw transmission on all axis.
- Powerful 550W variable frequency motor for excellent performance and low maintenance.
- Variable cutting up to 118 inches per minute.
- Spindle speeds up to 24,000 rpm with automatic spindle ON/OFF control.
- Positional accuracy up to +/-0.004 inches.
- Aluminum table with integrated hold down clamps.

SPECIFICATION

ITEM NO.	EC-617 M1
X AXIS CUTTING CAPACITY	16" (406 mm)
Y AXIS CUTTING CAPACITY	24" (610 mm)
Z AXIS CUTTING CAPACITY	4" (102 mm)
POSITIONAL ACCURACY	±0.004" (± 102 mm)
OVERALL DIMENSIONS MACHINE ONLY(W x L x H)	27¼"x38½"x27½"(704x980x700 mm)
WITH STAND(W x L x H)	40½"x31½"x55½"(1020x800x1400 mm)
WITH STAND & ENCLOSURE(W x L x H)	32¼"x43¼"x56¼"(820x1100x1430 mm)
SPINDLE SPEED	0 - 24,000 tr/min
MOTOR	550W/variable frequency motor
TABLE MATERIAL	Aluminium
TABLE SIZE	38"x22"
PROGRAMMING SOFTWARE INCLUDED	MASSO HTG5A15 Controller
CUTTING SPEEDS	Variable - Up to 118" per minute
INPUT POWER REQUIREMENTS	110/115V - 9A
COLLETS (HOW MANY & SIZES INCLUDED)	1x¼" (6 mm)
WEIGHT	308 lbs (140 kg)



i-Carver



CNC controller panel
#EC-617FSB



EC-617 M1

Optional Accessories

Compatible for CNC Machine EX-617 M1 and EC-617 M1 HC.



SAFETY ENCLOSURE
(ideal for educational users)
#EC-617X



STAND
#EC-617BSD



Dust Collection System
#EC-617DC

USA

6243 Industrial PKWY, Whitehouse, OH 43571, USA.
Service: 844 877 5234 (toll-free), 419 877 5234

Canada

BSI Distributor Source Inc.
120 Wellington St. N. Unit 3A Thorold, ON, L2V5E7
Service: 866.987.2855

E-mail: customerservice@gipowerproducts.com
www.general.ca • www.gipowerproducts.com • www.excaliburpowertool.com

