

Product Manual

#10-210, #10-210 DAS, #10-210CF & #10-210 DAS CF





IMPORTANT SAFETY

INSTRUCTIONS WARNING – To reduce risk of injury:

1. **FOR YOUR OWN SAFETY, READ INSTRUCTION MANUAL BEFORE OPERATING THE TOOL.** Learn the tool's application and limitations as well as the specific hazards peculiar to it.
2. **KEEP GUARDS IN PLACE** and in working order.
3. **ALWAYS WEAR EYE PROTECTION.**
4. **GROUND ALL TOOLS.** If tool is equipped with three prong plug, it should be plugged into a three-hole electrical receptacle. If an adapter is used to accommodate a two prong receptacle, the adapter lug must be attached to a known ground. Never remove the third prong.
5. **KEEP WORK AREA CLEAN.** Cluttered areas and benches invite accidents.
6. **DON'T USE IN DANGEROUS ENVIRONMENT.** Don't use power tools in damp or wet locations, or expose them to rain. Keep work area well-lighted.
7. **KEEP CHILDREN AND VISITORS AWAY.** All children and visitors should be kept a safe distance from work area.
8. **MAKE WORKSHOP CHILDPROOF.** Use padlocks, master switches, or remove starter keys.
9. **DON'T FORCE TOOL.** It will do the job better and be safer at the rate for which it was designed.
10. **USE RIGHT TOOL.** Don't force tool or attachment to do a job for which it was not designed.
11. **WEAR PROPER APPAREL.** No loose clothing, gloves, neckties, rings, bracelets, or other jewelry to get caught in moving parts. Nonslip footwear is recommended. Wear protective hair covering to contain long hair.
12. **ALWAYS USE SAFETY GLASSES.** Wear safety glasses (must comply with ANSI Z87.1). Everyday eyeglasses only have impact resistant lenses; they are not safety glasses. Also use face or dust mask if cutting operation is dusty.
13. **SECURE WORK.** Use clamps or a vise to hold work when practical. It's safer than using your hands and frees both hands to operate tool.

14. **DON'T OVERREACH.** Keep proper footing and balance at all times.

15. **MAINTAIN TOOLS IN TOP CONDITION.** Keep tools sharp and clean for best and safest performance. Follow instructions for lubricating and changing accessories.

16. **DISCONNECT TOOLS** before servicing and when changing filters.

17. **USE RECOMMENDED ACCESSORIES.** The use of accessories and attachments not recommended by manufacturer may cause hazards or risk of injury to persons.

18. **AVOID ACCIDENTAL STARTING.** Make sure switch is in "OFF" position before plugging in power cord.

19. **NEVER STAND ON TOOL.** Serious injury could occur if the tool is tipped or if the fan blade is accidentally contacted.

20. **CHECK DAMAGED PARTS.** Before further use of the tool, a guard or other part that is damaged should be carefully checked to ensure that it will operate properly and perform its intended function-check for alignment of moving parts, binding of moving parts, breakage of parts, mounting, and any other conditions that may affect its operation. A guard or other part that is damaged should be properly repaired or replaced.

21. **NEVER LEAVE TOOL RUNNING UNATTENDED. TURN POWER OFF.** Don't leave tool until it comes to a complete stop.

22. **DRUGS, ALCOHOL, MEDICATION.** Do not operate tool while under the influence of drugs, alcohol or any medication.

23. **MAKE SURE TOOL IS DISCONNECTED FROM POWER SUPPLY** while motor is being mounted, connected or reconnected

WARNING:

This product can expose you to chemicals including lead which is known to the State of California to cause cancer and birth defects or other reproductive harm. For more information go to <http://www.p65warnings.ca.gov>.

WARNING:

Drilling, sawing, sanding or machining wood products generates wood dust and other substances known to the State of California to cause cancer. Avoid inhaling dust generated from wood products or use a dust mask or other safeguards for personal protection. Wood products emit chemicals known to the State of California to cause birth defects or other reproductive harm. For more information go to <http://www.p65warnings.ca.gov/wood>.

Table of Contents

IMPORTANT SAFETY INSTRUCTIONS	2
Table of Contents	3
Electrical Requirements	4
Specifications	5
For Your Own Safety	5
Contents of Shipping Carton	6
Tools Required for Assembly	6
Assembly	6
Operating Instructions	10
Maintenance & Servicing	11
Recommended Optional Accessories	12
Warranty and Service	13
Parts Breakdown for the #10-210/#10-210CF Dust Collector	14
Parts List	15

Electrical Requirements

In the event of a malfunction or breakdown, grounding provides a path of least resistance for electric current to reduce the risk of electric shock. This tool is equipped with an electric cord having an equipment-grounding conductor and a grounding plug. The plug must be plugged into a matching outlet that is properly installed and grounded in accordance with all local codes and ordinances.

Do not modify the plug provided. If it will not fit the outlet, have the proper outlet installed by a qualified electrician.

Improper connection of the equipment-grounding conductor can result in a risk of electric shock. The conductor, with insulation having an outer surface that is green with or without yellow stripes, is the equipment grounding conductor. If repair or replacement of the electric cord or plug is necessary, do not connect the equipment-grounding conductor to a live terminal.

Check with a qualified electrician or service personnel if the grounding instructions are not completely understood, or if in doubt as to whether the tool is properly grounded.

Use only three wire extension cords that have three-prong grounding plugs and three-pole receptacles that accept the tool's plug*.

Repair or replace a damaged or worn cord immediately.

This tool is intended for use on a circuit that has an outlet that looks the one illustrated in Figure A below. The tool has a grounding plug that looks like the grounding plug as illustrated in Figure A below. A temporary adapter, which looks like the adapter as illustrated in Figures B below, may be used to connect this plug to a two-pole receptacle, as shown in Figure B if a properly grounded outlet is not available.** The temporary adapter should only be used until a properly grounded outlet can be installed by a qualified electrician. The green colored rigid ear or tab, extending from the adapter, must be connected to a permanent ground such as a properly grounded outlet box.



* Canadian electrical codes require extension cords to be certified SJT type or better.

** Use of an adapter in Canada is not acceptable.

Specifications

Model Number	#10-210/#10-210CF
Bag Filter	2 Microns
Canister Filter	1 Micron
Inlet Diameter.....	1-6" / 3- 4"
Blower Wheel Diameter.....	12"
Overall Dimensions (L x W x H/in)	60" x 32-5/8" x 76"
Sound Rating	80-95 dB
Static Pressure.....	15 ½" of Water
Air Flow	2280 CFM
Bag Diameter.....	20"
Motor	3 HP, 220V, 60Hz, 3 PH, 18A
Weight	141 lbs. (194 lbs. #10-210 CF)
Shipping Weight	151 lbs. (200 lbs. #10-210CF)

For Your Own Safety

1. Read and understand instruction manual before installing or operating air cleaner.
2. To reduce the risk of injury disconnect the air cleaner from the power source (unplug) before servicing or changing filters.
3. If ceiling mounted, bottom of air cleaner must be at least 7 feet above the floor.
4. If ceiling mounted, mounts must be anchored to building structure which will support a minimum of at least 100 pounds. Never mount to surfaces such as dry wall or false ceiling grids, etc.
5. To reduce the risk of electrical shock, do not expose air cleaner to water or rain.
6. Never duct a machine directly into the air cleaner.
7. To avoid a potentially dangerous situation, do not use this equipment to filter flammable vapors or smoke. This air cleaner is designed and intended for the filtration of air borne wood dust only. It is neither designed nor intended for any other purpose whatsoever.
8. Failure to comply may result in serious injury and / or property damage.

The above specifications were current at the time this manual was published, but because of our policy of continuous improvement, JET reserves the right to change specifications at any time and without prior notice, without incurring obligations.

Contents of Shipping Carton

- 2 Drum
- 1 Fan/Motor Assembly
- 2 "Snap Rings"
- 1 Connector
- 1 Base Plate
- 4 Caster
- 2 Filter Bag
- 2 Collector Bag
- 2 Retainers Belts
- 1 Hardware Bag
- 2 Vertical Support Rods
- 3 Rubber Gasket
- 1 Hose Inlet (3-Hole Manifold)
- 2 Bag Hangers
- 2 Filter Cartridge (model 10-210CF only)
- 1 Manual and Warranty Card

Tools Required for Assembly

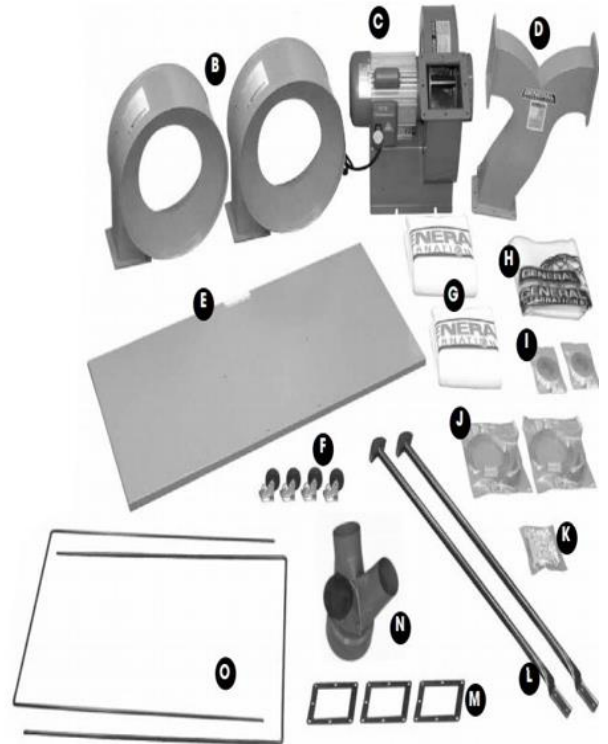
- 1 Flat Piece of Wood, (such as a ruler)
- 1 Medium Phillips Screwdriver
- 1 10-12 mm Open End Wrench or Adjustable Wrench
- 1 Extra person to help with lifting

Assembly

CAUTION ⚠ Warning

* Serious personal injury could occur if you connect the machine to the power source before you have completed the set-up process. Do not hook the machine up to a power source until instructed.

* Use caution and wear gloves when handling metal parts such as the base which can cut if handled carelessly.



BASE UNIT ASSEMBLY

Casters

1. Install the four casters to the underside of the base as follows: (Fig.1)
2. Place the base plate upside down and attach the 4 casters to the base using 16 hex head flange bolts (4 per caster). Tighten with the supplied 12 mm wrench.

Motor and Impeller Assembly

1. Place the base with casters down on the ground.
2. Turn the base right side up and secure the fan/motor assembly to the base as shown using 4 hex head flange bolts. Tighten with the supplied 12 mm wrench. (Fig.2)
3. Install a rubber gasket on the opening of the fan /motor assembly outlet. (Fig. 3)
4. Attach the connector to the fan/motor assembly as shown using 8 hex head flange bolts. Tighten with the supplied 12 mm wrench. (Fig. 4)
5. Install a rubber gasket on one outlet of the connector, then attach one drum to the connector using 8 hex head bolts. (Fig. 5)
6. Repeat step 5 & 6 with the second drum and connector outlet.

Fig. 1



Fig. 2

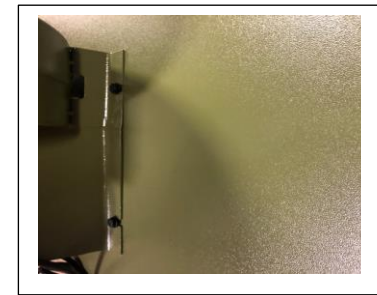


Fig. 3

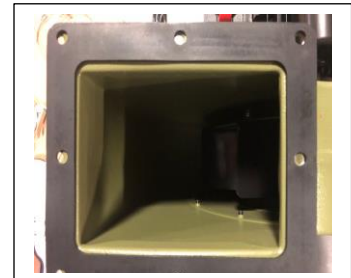
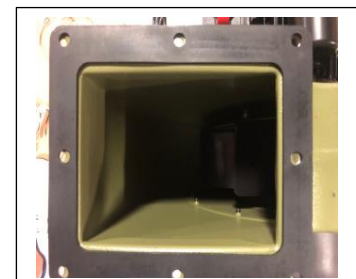


Fig.4

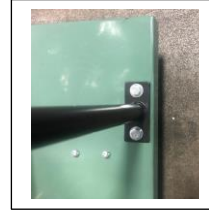


Fig. 5



7. Attach the two vertical support rods to the rear of the base plate using 4 hex head bolts (2 per supports). Tighten with the supplied 12 mm wrench. (Fig. 6)

Fig. 6



8. With the help of an assistant line up the holes in the drums with the holes in the support rods and secure using 4 hex head bolts (2 per drum). (Fig. 7 & 8)

9. Fit the hose inlet (3-hole manifold) over the main air inlet as shown and secure it in place using the supplied pan head screw. (Fig.9)

Fig.7



Filter Bag Assembly

If you purchased a #10-210 Dust Collector, this section describes the assembly and installation of the contents of the Filter Bag Kit.

Filter Bag Installation

1. Place the bag hangers, 1 by 1, on the drum by loosening the 2 bolts on the rear support rod & slide the bag hanger in between the vertical rod and drum and tighten hex bolt. (Fig. 10)
2. Slide the filter bag loop over the hanger hook.
(Fig. 10)
3. Feed the retainer strap through the loops on the filter bag and fasten to the collector housing.
(Fig. 10)

Fig. 9



Fig. 10



USE CAUTION AND WEAR GLOVES WHEN HANDLING METAL PARTS SUCH AS BELT CLAMPS, WHICH CAN CUT IF HANDLED CARELESSLY.

Canister Kit Assembly

If you purchased Model #10-210-CF Dust Collector, this section describes the assembly and installation of the contents of the Canister Kits.

Canister Filter

1. Mount the handle onto the canister filter with two hex nuts, two flat washers, and a lock washer. (Fig. 12)
2. Mount the canister filter on top of the collector housing and tighten the knobs on the canister filter. (Fig. 13)
3. Repeat steps 1 & 2 for second canister.

Collector Bag Installation

1. Place the snap ring over the top of the plastic bag and fold the bag over the ring **approximately three inches**. (Fig.14)
2. Insert the snap ring of the collector bag into the bottom of the housing **at an angle**. (Fig. 15)
3. Pull down on the snap ring to make sure the ring seats, “snaps”, into place in the housing, and that the plastic bag hangs down approximately 3 inches so that there are no air leaks.
4. Repeat steps 1,2 & 3 for second drum.
5. Position the plastic window in front so that you can easily see when the collector bag is full, if applicable.

Fig. 12



Fig. 13



Fig. 14



Fig. 15



Operating Instructions

WARNING: ⚠

Electrical Connections All electrical connections must be done by a qualified electrician. All adjustments or repairs must be done with the dust collector disconnected from the power source, unplugged. Failure to comply may result in serious injury!

The #10-210/#10-210CF dust collectors are rated at 110/220V, Prewired 115V. Use a plug and outlet rated at least 20 amps. The circuit for the machine should also be protected by a minimum 20 amp circuit breaker or fuse. Keep in mind that a circuit being used by other machines, tools, lights, heaters, etc. at the same time will add to the electrical load.

A dedicated circuit to the dust collector will give you the best results since dust collectors are generally used at the same time other tools are running. Turning the Machine On & Off This machine is intended for indoor use only. All Models Before hooking up to the power source, make sure that the switch is in the off position

ON/OFF SWITCH

The model 10-210M1/10-210CF M1 Dust collector is equipped with a simple “rocker style” On/Off switch featuring a removable lock out safety key.

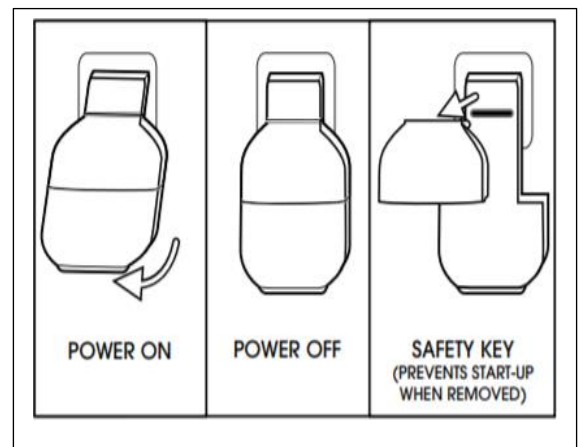
To prevent unauthorized use or unintentional start-up, remove the safety key and store it in a safe place whenever the dust collector is not in use.

To start the dust collector, insert the safety key and pull up the switch. To stop the machine, push down on the power switch.


WARNING: ⚠

Make sure the switch is in the “OFF” position before plugging in the power cord.

Remove the switch key whenever the dust collector is not in use. Place it in a safe place and out of the reach of children.




MAINTENANCE & SERVICING

 **Make sure the switch is in the “OFF” position and unplug the unit from the power source before performing any maintenance.**

This machine operates on 110V; if you suspect any electrical problems call a qualified electrician to do the verification of the electrical circuit or the machine. If you need further help with your dust collector contact your GENERAL distributor or our Technical Service Department at 1-888-664-0449.

Cleaning the Filter Bag: 10-210.

 **CAUTION:** Wearing a particle mask or respirator for protection against fine dust particles during cleaning is highly recommended.

During first use and after cleaning, the filter bag may allow some dust to escape. This is normal and will stop after a short period of time.


Clean both the filter and collector bags frequently to keep the collector's performance at its optimum. To clean:

1. Disconnect the machine from the power source.
2. Unhook the filter bag from the hanger and shake the bag so that the majority of the dust falls into the collector bag.
3. Loosen the retaining strap, remove the filter bag from the housing.
4. Turn the bag inside out and clean.
5. Turn the bag outside in and re-attach to the housing using the retainer strap to secure.


Removing the Collector Bag: #10-210/#10-210CF

1. Disconnect the machine from the power source.
2. Remove the collector bag by pushing the ring of the collector bag upwards and pulling the bag out at an angle.
3. Empty the contents into an appropriate container.
4. Turn the bag inside out and clean.
5. Turn the bag outside in and insert into the housing. To replace the collector bag, refer to Collector Bag Installation on page 11. Use the proper type hose to connect the dust collector to the machine being operated. Dryer vent hose is **not** acceptable for this purpose. Contact your nearest General distributor for the full line of General Dust Collector Hoses and Accessories. Customize your installation and obtain maximum performance with General dust hoods, hoses, clamps, fittings, and blast gates.

Cleaning the Filter: #10-210CK

 **WARNING** Never perform maintenance on this machine before turning switch off and removing plug from power source. Failure to comply may cause serious injury! Clean both the canister filter and collector bags frequently to keep the collector's performance at its optimum. To clean the filter, turn the handle a couple of rotations so the dust falls into the collection bag.

Removing the Collector Bag: #10-210CK

 **CAUTION:** Wearing a particle mask or respirator for protection against fine dust particles during cleaning is highly recommended.

1. Disconnect the machine from the power source outlet.
2. Remove the collector bag by pushing the ring of the collector bag upwards at an angle and pulling the bag and snap ring out.
3. Empty the contents into an appropriate container. To replace the collector bag, refer to the Collector Bag Installation on page 12.

Motor

Make frequent inspections of the motor fan and blow out (with low pressure air hose) or vacuum any accumulation of foreign material in order to maintain normal motor ventilation.

Connecting the Dust Collector to a Machine

Use the proper type hose to connect the dust collector to the machine being operated. Dryer vent hose is not acceptable for this purpose. Contact your nearest General distributor for the full line of General Dust Collector Hoses and Accessories. Customize your installation and obtain maximum performance with General dust hoods, hoses, clamps, fittings, and blast gates.

Grounding the Dust Collection System

The dust collection system includes the dust collector and the hose, or ductwork you use to connect the tools. The dust collector is grounded through the ground wire in the cord. The hose or ductwork you use to connect the tool to the dust collector must also be grounded.

Warranty Statement and Policy

Commercial General™ (Green Line) & Excalibur™ (Black Line) branded products: 3 -YEAR LIMITED WARRANTY All products are warranted for a period of 3 years (36 months) from the date of purchase. General™ agrees to repair or replace any part or component which upon examination, proves to be defective in either workmanship or material or parts and labor to the original purchaser during this 3-year warranty period, subject to the “conditions and exceptions” as listed below. Repairs made without the written consent of General will void the warranty

EXTEND YOUR WARRANTY: Register your new General™ or Excalibur™ within 60 days of your purchase and get an extended 2 years, for a total of 5 years, of warranty coverage.

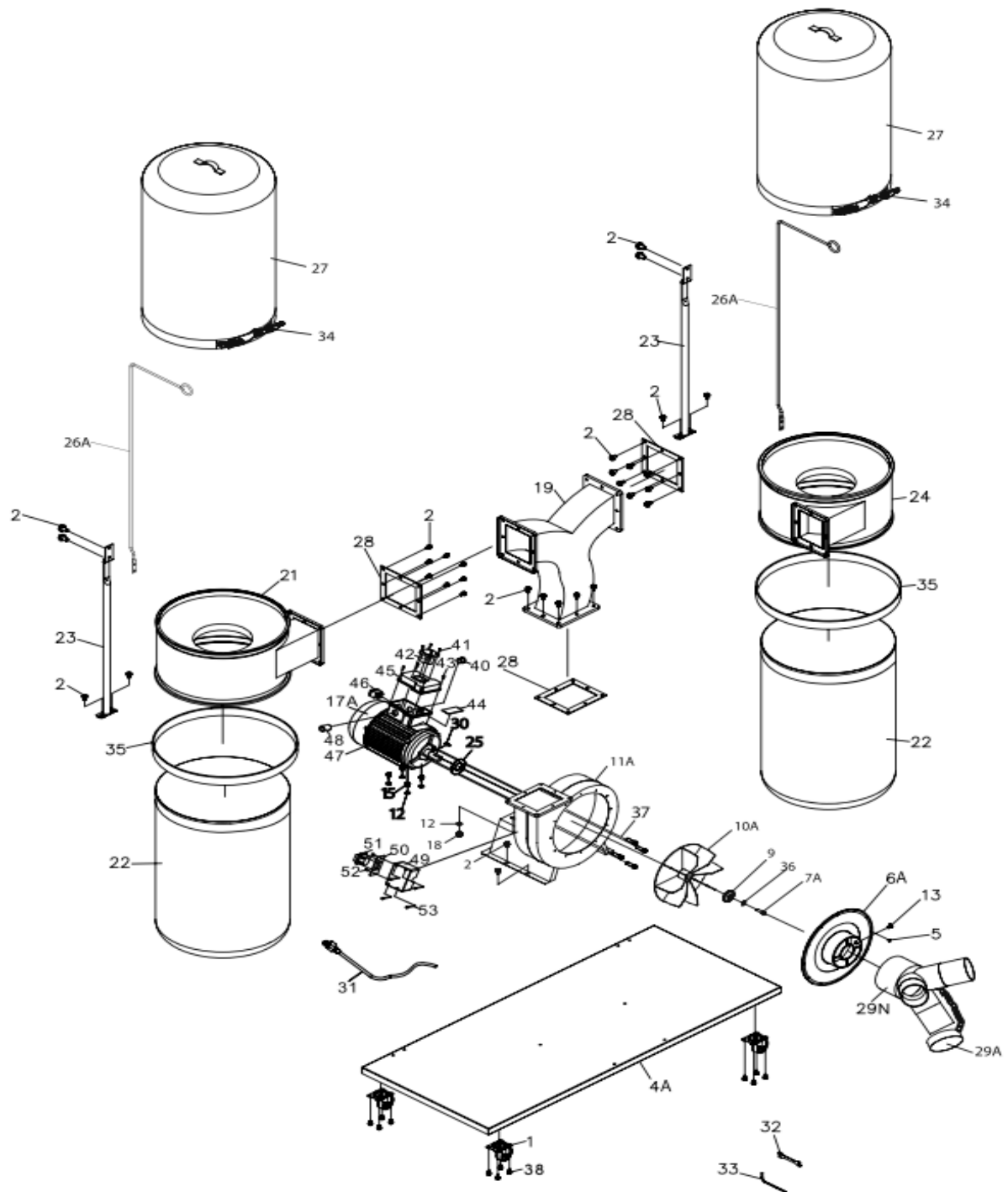
Go to www.general.ca/warranty/registration

DISCLAIMER: Because we are committed to making constant improvements, General™ reserves the right to make changes to components, parts or features of this unit as deemed necessary, without prior notice and without obligation to install any such changes on previously delivered units. Reasonable care is taken at the factory to ensure that the specifications and information in this manual corresponds with that of the unit with which it was supplied.

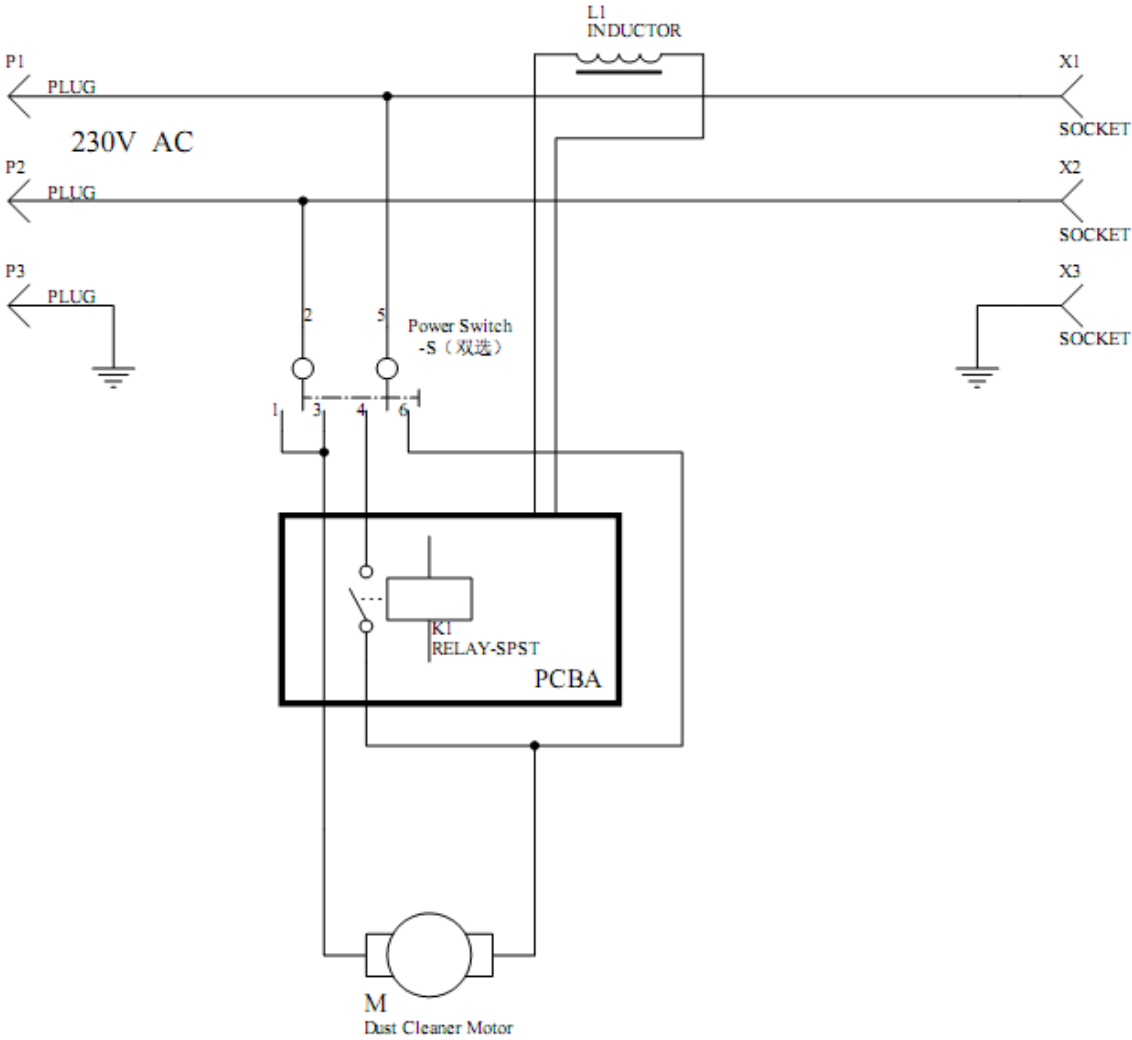
TO FILE A CLAIM: To file a claim under our Standard 3 -year Limited Warranty, all defective parts, components or machinery must be returned freight or postage prepaid to General™, or to a nearby distributor, repair center or other location designated by General™. For further details call our service department at 1-888-664-0449 or info@gipowerproducts.com Along with the return of the product being claimed for warranty, a copy of the original proof of purchase and a “letter of claim” must be included (a warranty claim form can also be used and can be obtained, upon request, from General™ or an authorized distributor) clearly stating the model and serial number of the unit (if applicable) and including an explanation of the complaint or presumed defect in material or workmanship.

CONDITIONS AND EXCEPTIONS: This coverage is extended to the original purchaser only. Prior warranty registration is not required but documented proof of purchase, i.e. a copy of original sales invoice or receipt showing the date and location of the purchase as well as the purchase price paid, must be provided at the time of claim. Warranty does not include failures, breakage or defects deemed after inspection by General™ to have been directly or indirectly caused by or resulting from; improper use, or lack of or improper maintenance, misuse or abuse, negligence, accidents, damage in handling or transport, or normal wear and tear of any generally considered consumable parts or components. Repairs made without the written consent of General™ will void all warranty. This five-year warranty does not cover products used for commercial, industrial or educational purposes. The warranty term for these claims will be limited to a two-year period.

Schematic for #10-210 Dust Collector



Electrical diagram for DAS units.



Parts Breakdown for #10-210 Dust Collector

10-110DAS M1				
NO	PART NO.	DESCRIPTION	SPECIFICATIONS	QTY
1	10110-01	CASTER		4
2	10110-02	HEX.HEAD BOLT	5/16"×1/2"L	40
4A	10110-04A	BASE PLATE		1
5	10110-05	PAN HEAD SCREW	3/16"×3/8"L	12
6A	10110-06A	INLET COVER		1
7A`	10110-07A	CAP SCREW	M6×16MM L	1
9	10110-09	WASHER		1
10A	10110-10A	FAN		1
11A	10110-11A	COLLECTOR BODY		1
12	10110-12	WASHER	5/16"	8
13	10110-13	PAN HEAD SCREW	3/16"×3/8"L	1
14	10110-14	HEX.HEAD BOLT	5/16"×3/4"L	2
15	10110-15	HEX.HEAD BOLT	5/16"×1"L	4
16	10110-16	SWITCH		1
17A	10110-17A	MOTOR		1
18	10110-18	NUT	5/16"	4
19	10110-19	CONNECTOR		1
22	10110-22	COLLECTOR BAG		1
23	10110-23	VERTICAL SUPPORT ROD		2
24	10110-24	DRUM		1
25	10110-25	GASKET		1
26A	10110-26A	HANGER		1
27	10110-27	FILTER		1
28	10110-28	FOAM GASKET		2
29	10110-29	HOSE INLET("Y"FITTING)		1
29A	10110-29A	CAP		1
30	10110-30	KEY	5MM×40MM	1
31	10110-31	POWER CORD		1
32	10110-32	OPEN END WRENCH	12mm	1
33	10110-33	HEX.WRENCH	5	1
34	10110-34	BELT CLAMP		1
35	10110-35	SNAP RING		1
36	10110-36	LOCK WASHER	1/4"	1
37	10110-37	HEX.HEAD BOLT	3/8"×1"L	4
38	10110-38	HEX.HEAD BOLT	5/16"×2/3"L	12
39	10110-39	PAN HEAD SCREW	3/16"×1/2"L	16
40	10110-40	POWER CORD		1
41	10110-41	PAN HEAD SCREW		4
42	10110-42	automatic socket-outlet		1

43	10110-43	PAN HEAD SCREW	ST2.9×12	4
44	10110-44	circuit board		1
45	10110-45	switch box A		1
46	10110-46	ON/OFF switch with automatic function		1
47	10110-47	switch box B		1
48	10110-48	fastener		1
49	10110-49	switch box C		1
50	10110-50	switch cover plate		1
51	10110-51	universal switch		1
52	10110-52	PAN HEAD SCREW	ST4.2×9.5	2
53	10110-53	PAN HEAD SCREW	3/16"×2-1/2"L	4

